

**Manufacturer/Supplier:**

WUXI DONGLIN SCI&TECH DEVELOPMENT CO., LTD

**Address:** A1-203 Mingpin CityII, No.8 Xihudong Road, Liangxi District  
Wuxi Jiangsu Province, China

TELE: 86-510-82732223

FAX: 86-510-82720101-8014

**Web :** [www.dldevelop.com](http://www.dldevelop.com)

Email: [info@dldevelop.com.cn](mailto:info@dldevelop.com.cn) [service@dldevelop.com.cn](mailto:service@dldevelop.com.cn)

**Product name:** Mouse anti-BCL2 Antibody

**Catalog:** DL95450A

**Synonyms:** Apoptosis regulator Bcl-2

**Immunogen:** KLH-conjugated synthetic peptide encompassing a sequence of human BCL2. The exact sequence is proprietary.

**Form:** Liquid

**Concentration:** 1mg/mL

**Size:** 100 ul/50 ul

**Host:** Mouse

**Reactivity:** Human, Mouse, Rat

**Application:** WB, IHC, IF/IC

**Clonality:** Monoclonal

**Dilution:** WB (1/1000 - 1/2000),  
IHC (1/200 - 1/500), IF/IC (1/100 -

1/200)

**Entrez Gene:** 596/12043/24224

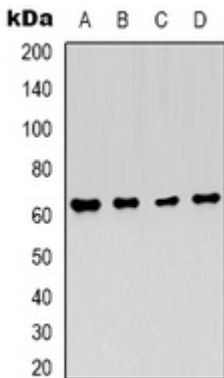
**SwissProt:** P10415/P10417/P49950

**Purification:**

**Buffer:** Liquid in 0.42% Potassium phosphate, 0.87% Sodium chloride, pH 7.3, 30% glycerol, and 0.01% sodium azide.

**WB description:**

Western blot analysis of BCL2 expression in HeLa (A) whole cell lysates.



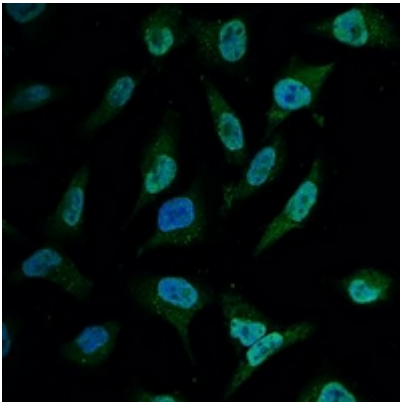
**IHC description:**

Immunohistochemical analysis of BCL2 staining in human tonsil

formalin fixed paraffin embedded tissue section. The section was pre-treated using heat mediated antigen retrieval with sodium citrate buffer (pH 6.0). The section was then incubated with the antibody at room temperature and detected using an HRP conjugated compact polymer system. DAB was used as the chromogen. The section was then counterstained with haematoxylin and mounted with DPX.

### **IF/ICC description:**

Immunofluorescent analysis of BCL2 staining in Hela cells. Formalin-fixed cells were permeabilized with 0.1% Triton X-100 in TBS for 5-10 minutes and blocked with 3% BSA-PBS for 30 minutes at room temperature. Cells were probed with the primary antibody i



### **Storage:**

Store at -20°C. Avoid repeated freeze / thaw cycles.