

Manufacturer/Supplier:

WUXI DONGLIN SCI&TECH DEVELOPMENT CO., LTD

Address: A1-203 Mingpin CityII, No.8 Xihudong Road, Liangxi District
Wuxi Jiangsu Province, China

TELE: 86-510-82732223

FAX: 86-510-82720101-8014

Web : www.dldevelop.com

Email: info@dldevelop.com.cn service@dldevelop.com.cn

Product name: Mouse anti-Alpha-tubulin Antibody

Catalog: DL95446A

Synonyms: TUBA3; Tubulin alpha-1A chain; Alpha-tubulin 3;
Tubulin B-alpha-1; Tubulin alpha-3 chain

Immunogen: Recombinant protein corresponding to human
Alpha-tubulin.

Form: Liquid

Concentration: 1mg/mL

Size: 100 ul/50 ul

Host: Mouse

Reactivity: Human, Mouse, Rat

Application: WB, IHC, IF/IC, IP

Clonality: Monoclonal

Dilution: WB (1/1000 - 1/3000),
IHC (1/50 - 1/100), IF/IC (1/50 -

1/100), IP (1/50 - 1/100)

Entrez Gene: 22142; 22143/64158; 500929

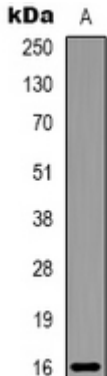
SwissProt: Q71U36; P68363/P68369; P05213/P68370;
Q6P9V9

Purification:

Buffer: Liquid in 0.42% Potassium phosphate, 0.87% Sodium chloride, pH 7.3, 0.2% BSA, 30% glycerol, and 0.01% sodium azide.

WB description:

Western blot analysis of Alpha-tubulin expression in HeLa (A), mouse brain (B), rat brain (C) whole cell lysates.

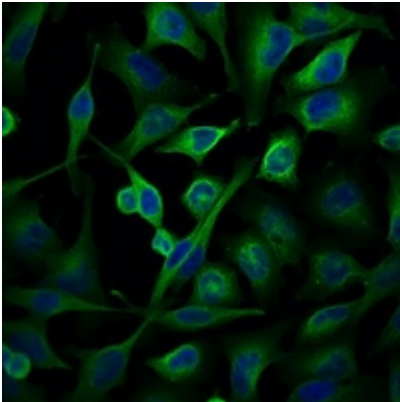


IHC description:

Immunohistochemical analysis of Alpha-tubulin staining in human colon cancer formalin fixed paraffin embedded tissue section. The section was pre-treated using heat mediated antigen retrieval with sodium citrate buffer (pH 6.0). The section was then incubated with the antibody at room temperature and detected using an HRP conjugated compact polymer system. DAB was used as the chromogen. The section was then counterstained with haematoxylin and mounted with DPX.

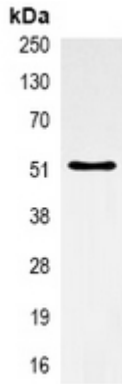
IF/ICC description:

Immunofluorescent analysis of Alpha-tubulin staining in HeLa cells. Formalin-fixed cells were permeabilized with 0.1% Triton X-100 in TBS for 5-10 minutes and blocked with 3% BSA-PBS for 30 minutes at room temperature. Cells were probed with the primary a



IP description:

Immunoprecipitation of Alpha-tubulin from 0.5mg mouse brain whole cell extract lysate, using anti-Alpha-tubulin Antibody.



Storage:

Store at -20°C. Avoid repeated freeze / thaw cycles.