

Manufacturer/Supplier:

WUXI DONGLIN SCI&TECH DEVELOPMENT CO., LTD

Address: A1-203 Mingpin CityII, No.8 Xihudong Road, Liangxi District
Wuxi Jiangsu Province, China

TELE: 86-510-82732223

FAX: 86-510-82720101-8014

Web : www.dldevelop.com

Email: info@dldevelop.com.cn service@dldevelop.com.cn

Product name: Mouse anti-Alpha-tubulin (AcK40) Antibody

Catalog: DL95445A

Synonyms: Tubulin alpha-1B chain; Alpha-tubulin ubiquitous;
Tubulin K-alpha-1; Tubulin alpha-ubiquitous chain

Immunogen: KLH-conjugated synthetic peptide encompassing a
sequence of human Alpha-tubulin. The exact
sequence is proprietary.

Form: Liquid

Concentration: 1mg/mL

Size: 100 ul/50 ul

Host: Mouse

Reactivity: Human, Mouse, Rat

Application: WB, IHC

Clonality: Monoclonal

Dilution: WB (1/1000 - 1/2000),

IHC (1/100 - 1/200)

Entrez Gene: 7277

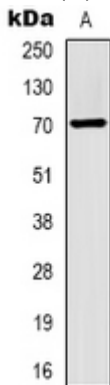
SwissProt: P68363

Purification:

Buffer: Liquid in 0.42% Potassium phosphate, 0.87% Sodium chloride, pH 7.3, 30% glycerol, and 0.01% sodium azide.

WB description:

Western blot analysis of Alpha-tubulin (AcK40) expression in HeLa (A) whole cell lysates.



IHC description:

Immunohistochemical analysis of Alpha-tubulin (AcK40) staining

in human breast cancer, mouse brain formalin fixed paraffin embedded tissue section. The section was pre-treated using heat mediated antigen retrieval with sodium citrate buffer (pH 6.0). The section was then incubated with the antibody at room temperature and detected using an HRP conjugated compact polymer system. DAB was used as the chromogen. The section was then counterstained with haematoxylin and mounted with DPX.

Storage:

Store at -20°C. Avoid repeated freeze / thaw cycles.