

Manufacturer/Supplier:

WUXI DONGLIN SCI&TECH DEVELOPMENT CO., LTD

Address: A1-203 Mingpin CityII, No.8 Xihudong Road, Liangxi District
Wuxi Jiangsu Province, China

TELE: 86-510-82732223

FAX: 86-510-82720101-8014

Web : www.dldevelop.com

Email: info@dldevelop.com.cn service@dldevelop.com.cn

Product name: Mouse anti-ABCB5 Antibody

Catalog: DL95439A

Synonyms: ATP-binding cassette sub-family B member 5;
ABCB5 P-gp; P-glycoprotein ABCB5

Immunogen: KLH-conjugated synthetic peptide encompassing a
sequence of human ABCB5. The exact sequence is
proprietary.

Form: Liquid

Concentration: 1mg/mL

Size: 100 ul/50 ul

Host: Mouse

Reactivity: Human

Application: WB, IHC

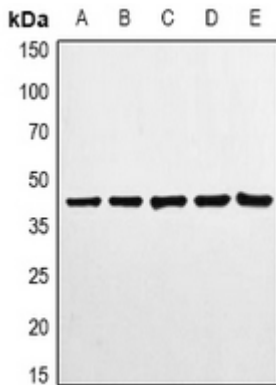
Clonality: Monoclonal

Dilution: WB (1/1000 - 1/2000),

IHC (1/200 - 1/500)

Entrez Gene: 340273**SwissProt:** Q2M3G0**Purification:****Buffer:** Liquid in 0.42% Potassium phosphate, 0.87% Sodium chloride, pH 7.3, 30% glycerol, and 0.01% sodium azide.**WB description:**

Western blot analysis of ABCB5 expression in HeLa (A), 293T (B) whole cell lysates.

**IHC description:**

Immunohistochemical analysis of ABCB5 staining in human breast

cancer formalin fixed paraffin embedded tissue section. The section was pre-treated using heat mediated antigen retrieval with sodium citrate buffer (pH 6.0). The section was then incubated with the antibody at room temperature and detected using an HRP conjugated compact polymer system. DAB was used as the chromogen. The section was then counterstained with haematoxylin and mounted with DPX.

Storage:

Store at -20°C. Avoid repeated freeze / thaw cycles.