

**Manufacturer/Supplier:**

WUXI DONGLIN SCI&TECH DEVELOPMENT CO., LTD

**Address:** A1-203 Mingpin CityII, No.8 Xihudong Road, Liangxi District  
Wuxi Jiangsu Province, China

TELE: 86-510-82732223

FAX: 86-510-82720101-8014

**Web :** [www.dldevelop.com](http://www.dldevelop.com)

Email: [info@dldevelop.com.cn](mailto:info@dldevelop.com.cn) [service@dldevelop.com.cn](mailto:service@dldevelop.com.cn)

**Product name:** Mouse anti-mCherry-tag Antibody

**Catalog:** DL95405A

**Synonyms:**

**Immunogen:** Recombinant protein corresponding to mCherry-tag.

**Form:** Liquid

**Concentration:** 1mg/mL

**Size:** 100 ul/50 ul

**Host:** Mouse

**Reactivity:**

**Application:** WB, IP

**Clonality:** Monoclonal

**Dilution:** WB (1/2000 - 1/5000),  
IP (1/100 - 1/200)

**Entrez Gene:**

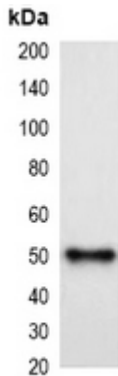
**SwissProt:**

**Purification:**

**Buffer:** Liquid in 0.42% Potassium phosphate, 0.87% Sodium chloride, pH 7.3, 30% glycerol, and 0.01% sodium azide.

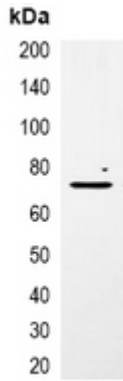
**WB description:**

Western blot analysis of over-expressed mCherry-tagged protein in 293T cell lysate.



**IP description:**

Immunoprecipitation of mCherry-tagged protein from HEK293T cells transfected with vector overexpressing mCherry tag, using anti-mCherry-tag Antibody.



**Storage:**

Store at -20°C. Avoid repeated freeze / thaw cycles.