

Manufacturer/Supplier:

WUXI DONGLIN SCI&TECH DEVELOPMENT CO., LTD

Address: A1-203 Mingpin CityII, No.8 Xihudong Road, Liangxi District
Wuxi Jiangsu Province, China

TELE: 86-510-82732223

FAX: 86-510-82720101-8014

Web : www.dldevelop.com

Email: info@dldevelop.com.cn service@dldevelop.com.cn

Product name: Rabbit anti-Glu-Glu-tag Antibody

Catalog: DL95382A

Synonyms:

Immunogen: KLH-conjugated synthetic peptide EYMPME.

Form: Liquid

Concentration: 1mg/mL

Size: 100 ul/50 ul

Host: Rabbit

Reactivity:

Application: WB, IP

Clonality: Polyclonal

Dilution: WB (1/500 - 1/1000), IP
(1/10 - 1/100)

Entrez Gene:

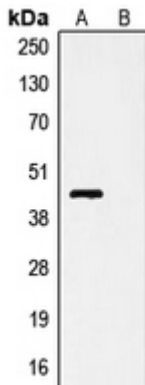
SwissProt:

Purification: The antibody was purified by immunogen affinity chromatography.

Buffer: Liquid in PBS, pH 7.3, 0.2% BSA, and 0.02% sodium azide.

WB description:

Western blot analysis of anti-Glu-Glu-tag Antibody against HEK293T cells transfected with vector overexpressing Glu-Glu tag (A) and untransfected (B).



IP description:

Storage:

Store at -20°C. Avoid repeated freeze / thaw cycles.