

Manufacturer/Supplier:

WUXI DONGLIN SCI&TECH DEVELOPMENT CO., LTD

Address: A1-203 Mingpin CityII, No.8 Xihudong Road, Liangxi District
Wuxi Jiangsu Province, China

TELE: 86-510-82732223

FAX: 86-510-82720101-8014

Web : www.dldevelop.com

Email: info@dldevelop.com.cn service@dldevelop.com.cn

Product name: Rabbit anti-His-tag Antibody

Catalog: DL95374A

Synonyms: 6 His epitope tag; Hexa His tag; HHHHHH epitope tag; HHHHHH tag; His tag

Immunogen: KLH-conjugated synthetic peptide HHHHHH.

Form: Liquid

Concentration: 1mg/mL

Size: 100 ul/50 ul

Host: Rabbit

Reactivity:

Application: WB, IP

Clonality: Polyclonal

Dilution: WB (1/1000 - 1/2000),
IP (1/10 - 1/100)

Entrez Gene:

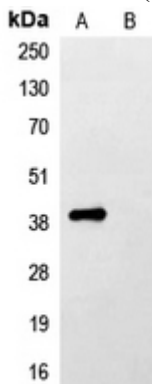
SwissProt:

Purification: The antibody was purified by immunogen affinity chromatography.

Buffer: Liquid in 0.42% Potassium phosphate, 0.87% Sodium chloride, pH 7.3, 30% glycerol, and 0.01% sodium azide.

WB description:

Western blot analysis of anti-His-tag Antibody against HEK293T cells transfected with vector overexpressing His tag (A) and untransfected (B).



IP description:

Storage:

Store at -20°C. Avoid repeated freeze / thaw cycles.