

**Manufacturer/Supplier:**

WUXI DONGLIN SCI&TECH DEVELOPMENT CO., LTD

**Address:** A1-203 Mingpin CityII, No.8 Xihudong Road, Liangxi District  
Wuxi Jiangsu Province, China

TELE: 86-510-82732223

FAX: 86-510-82720101-8014

**Web :** [www.dldevelop.com](http://www.dldevelop.com)

Email: [info@dldevelop.com.cn](mailto:info@dldevelop.com.cn)    [service@dldevelop.com.cn](mailto:service@dldevelop.com.cn)

**Product name:** Rabbit anti-LC3B Antibody

**Catalog:** DL95369A

**Synonyms:** MAP1ALC3; Microtubule-associated proteins  
1A/1B light chain 3B; Autophagy-related protein  
LC3 B; Autophagy-related ubiquitin-like modifier  
LC3 B; MAP1 light chain 3-like protein 2;  
MAP1A/MAP1B light chain 3 B; MAP1A/MAP1B  
LC3 B; Microtubule-associated pro

**Immunogen:** KLH-conjugated synthetic peptide encompassing a  
sequence within the N-term region of human LC3B.  
The exact sequence is proprietary.

**Form:** Liquid

**Concentration:** 1mg/mL

**Size:** 100 ul/50 ul

**Host:** Rabbit

**Reactivity:**

Human, Mouse, Rat, Bovine

**Application:** WB**Clonality:** Polyclonal**Dilution:** WB (1/500 - 1/2000)**Entrez Gene:**

81631/67443/64862

**SwissProt:**

Q9GZQ8/Q9CQV6/Q62625

**Purification:**

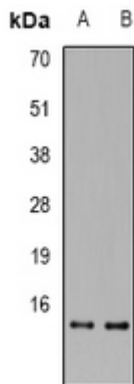
The antibody was purified by immunogen affinity chromatography.

**Buffer:**

Liquid in 0.42% Potassium phosphate, 0.87% Sodium chloride, pH 7.3, 30% glycerol, and 0.01% sodium azide.

**WB description:**

Western blot analysis of LC3B expression in U87MG (A), mouse brain (B) whole cell lysates.

**Storage:**

Store at -20°C. Avoid repeated freeze / thaw cycles.