

Manufacturer/Supplier:

WUXI DONGLIN SCI&TECH DEVELOPMENT CO., LTD

Address: A1-203 Mingpin CityII, No.8 Xihudong Road, Liangxi District
Wuxi Jiangsu Province, China

TELE: 86-510-82732223

FAX: 86-510-82720101-8014

Web : www.dldevelop.com

Email: info@dldevelop.com.cn service@dldevelop.com.cn

Product name: Rabbit anti-SPFH1 Antibody

Catalog: DL95345A

Synonyms: ERLIN1; C10orf69; KE04; KEO4; SPFH1; Erlin-1;
Endoplasmic reticulum lipid raft-associated protein
1; Protein KE04;
Stomatin-prohibitin-flotillin-HflC/K
domain-containing protein 1; SPFH
domain-containing protein 1; ERLIN2; C8orf2;
SPFH2; Erlin-2; Endoplas

Immunogen: KLH-conjugated synthetic peptide encompassing a
sequence within the center region of human SPFH1.
The exact sequence is proprietary.

Form: Liquid

Concentration: 1mg/mL

Size: 100 ul/50 ul

Host: Rabbit

Reactivity:

Human, Mouse, Rat, Bovine, Zebrafish

Application: WB, IHC

Clonality: Polyclonal

Dilution: WB (1/500 - 1/2000),
IHC (1/50 - 1/200)

Entrez Gene: 226144; 244373/290823

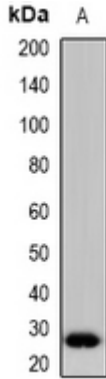
SwissProt: O75477; O94905/Q91X78; Q8BFZ9/B5DEH2

Purification: The antibody was purified by immunogen affinity chromatography.

Buffer: Liquid in 0.42% Potassium phosphate, 0.87% Sodium chloride, pH 7.3, 30% glycerol, and 0.01% sodium azide.

WB description:

Western blot analysis of SPFH1 expression in HepG2 (A), NIH3T3 (B), Hela (C) whole cell lysates.



IHC description:

Immunohistochemical analysis of SPFH1 staining in human liver formalin fixed paraffin embedded tissue section. The section was pre-treated using heat mediated antigen retrieval with sodium citrate buffer (pH 6.0). The section was then incubated with the antibody at room temperature and detected using an HRP conjugated compact polymer system. DAB was used as the chromogen. The section was then counterstained with haematoxylin and mounted with DPX.

Storage:

Store at -20°C. Avoid repeated freeze / thaw cycles.