

Manufacturer/Supplier:

WUXI DONGLIN SCI&TECH DEVELOPMENT CO., LTD

Address: A1-203 Mingpin CityII, No.8 Xihudong Road, Liangxi District
Wuxi Jiangsu Province, China

TELE: 86-510-82732223

FAX: 86-510-82720101-8014

Web : www.dldevelop.com

Email: info@dldevelop.com.cn service@dldevelop.com.cn

Product name: Rabbit anti-NLRX1 Antibody

Catalog: DL95335A

Synonyms: NOD26; NOD5; NOD9; NLR family member X1;
Caterpillar protein 11.3; CLR11.3;
Nucleotide-binding oligomerization domain protein
26; Nucleotide-binding oligomerization domain
protein 5; Nucleotide-binding oligomerization
domain protein 9

Immunogen: KLH-conjugated synthetic peptide encompassing a
sequence within the center region of human
NLRX1. The exact sequence is proprietary.

Form: Liquid

Concentration: 1mg/mL

Size: 100 ul/50 ul

Host: Rabbit

Reactivity: Human, Mouse, Rat

Application: WB, IHC

Clonality: Polyclonal

Dilution: WB (1/500 - 1/2000),
IHC (1/50 - 1/200)

Entrez Gene: 79671/270151/315599

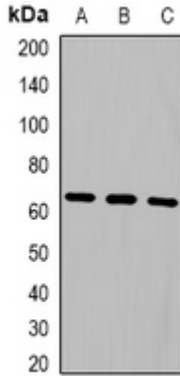
SwissProt: Q86UT6/Q3TL44/Q5FVQ8

Purification: The antibody was purified by immunogen affinity chromatography.

Buffer: Liquid in 0.42% Potassium phosphate, 0.87% Sodium chloride, pH 7.3, 30% glycerol, and 0.01% sodium azide.

WB description:

Western blot analysis of NLRX1 expression in HepG2 (A), Hela (B) whole cell lysates.



IHC description:

Immunohistochemical analysis of NLRX1 staining in human brain formalin fixed paraffin embedded tissue section. The section was pre-treated using heat mediated antigen retrieval with sodium citrate buffer (pH 6.0). The section was then incubated with the antibody at room temperature and detected using an HRP conjugated compact polymer system. DAB was used as the chromogen. The section was then counterstained with haematoxylin and mounted with DPX.

Storage:

Store at -20°C. Avoid repeated freeze / thaw cycles.