

Manufacturer/Supplier:

WUXI DONGLIN SCI&TECH DEVELOPMENT CO., LTD

Address: A1-203 Mingpin CityII, No.8 Xihudong Road, Liangxi District
Wuxi Jiangsu Province, China

TELE: 86-510-82732223

FAX: 86-510-82720101-8014

Web : www.dldevelop.com

Email: info@dldevelop.com.cn service@dldevelop.com.cn

Product name: Rabbit anti-CD299 Antibody

Catalog: DL95279A

Synonyms: CD209L; CD209L1; CD299; C-type lectin domain family 4 member M; CD209 antigen-like protein 1; DC-SIGN-related protein; DC-SIGNR; Dendritic cell-specific ICAM-3-grabbing non-integrin 2; DC-SIGN2; Liver/lymph node-specific ICAM-3-grabbing non-integrin; L-SI

Immunogen: KLH-conjugated synthetic peptide encompassing a sequence within the center region of human CD299. The exact sequence is proprietary.

Form: Liquid

Concentration: 1mg/mL

Size: 100 ul/50 ul

Host: Rabbit

Reactivity: Human, Mouse

Application: WB

Clonality: Polyclonal

Dilution: WB (1/500 - 1/2000)

Entrez Gene: 10332

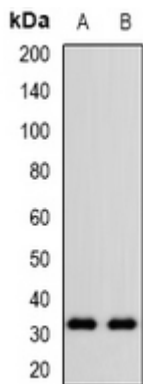
SwissProt: Q9H2X3

Purification: The antibody was purified by immunogen affinity chromatography.

Buffer: Liquid in 0.42% Potassium phosphate, 0.87% Sodium chloride, pH 7.3, 30% glycerol, and 0.01% sodium azide.

WB description:

Western blot analysis of CD299 expression in HEK293T (A), Hela (B), NIH3T3 (C), mouse lung (D), mouse heart (E) whole cell lysates.



Storage:

Store at -20°C. Avoid repeated freeze / thaw cycles.