

**Manufacturer/Supplier:**

WUXI DONGLIN SCI&TECH DEVELOPMENT CO., LTD

**Address:** A1-203 Mingpin CityII, No.8 Xihudong Road, Liangxi District  
Wuxi Jiangsu Province, China

**TELE:** 86-510-82732223

**FAX:** 86-510-82720101-8014

**Web :** [www.dldevelop.com](http://www.dldevelop.com)

**Email:** [info@dldevelop.com.cn](mailto:info@dldevelop.com.cn)    [service@dldevelop.com.cn](mailto:service@dldevelop.com.cn)

**Product name:** Rabbit anti-CD49f Antibody

**Catalog:** DL95268A

**Synonyms:** Integrin alpha-6; CD49 antigen-like family member  
F; VLA-6; CD49f

**Immunogen:** KLH-conjugated synthetic peptide encompassing a  
sequence within the center region of human CD49f.  
The exact sequence is proprietary.

**Form:** Liquid

**Concentration:** 1mg/mL

**Size:** 100 ul/50 ul

**Host:** Rabbit

**Reactivity:** Human, Mouse

**Application:** WB

**Clonality:** Polyclonal

**Dilution:** WB (1/500 - 1/2000)

**Entrez Gene:** 3655/16403

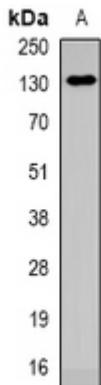
**SwissProt:** P23229/Q61739

**Purification:** The antibody was purified by immunogen affinity chromatography.

**Buffer:** Liquid in 0.42% Potassium phosphate, 0.87% Sodium chloride, pH 7.3, 30% glycerol, and 0.01% sodium azide.

### WB description:

Western blot analysis of CD49f expression in NIH3T3 (A) whole cell lysates.



**Storage:**



Store at -20°C. Avoid repeated freeze / thaw cycles.