

Manufacturer/Supplier:

WUXI DONGLIN SCI&TECH DEVELOPMENT CO., LTD

Address: A1-203 Mingpin CityII, No.8 Xihudong Road, Liangxi District
Wuxi Jiangsu Province, China

TELE: 86-510-82732223

FAX: 86-510-82720101-8014

Web : www.dldevelop.com

Email: info@dldevelop.com.cn service@dldevelop.com.cn

Product name: Rabbit anti-KIM1 Antibody

Catalog: DL95262A

Synonyms: KIM1; TIM1; TIMD1; Hepatitis A virus cellular receptor 1; HAVcr-1; Kidney injury molecule 1; KIM-1; T-cell immunoglobulin and mucin domain-containing protein 1; TIMD-1; T-cell immunoglobulin mucin receptor 1; TIM; TIM-1; T-cell membrane protein 1

Immunogen: KLH-conjugated synthetic peptide encompassing a sequence within the N-term region of human KIM1. The exact sequence is proprietary.

Form: Liquid

Concentration: 1mg/mL

Size: 100 ul/50 ul

Host: Rabbit

Reactivity: Human

Application: WB

Clonality: Polyclonal

Dilution: WB (1/500 - 1/2000)

Entrez Gene: 26762

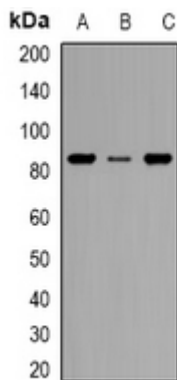
SwissProt: Q96D42

Purification: The antibody was purified by immunogen affinity chromatography.

Buffer: Liquid in 0.42% Potassium phosphate, 0.87% Sodium chloride, pH 7.3, 30% glycerol, and 0.01% sodium azide.

WB description:

Western blot analysis of KIM1 expression in Hela (A), HEK293T (B) whole cell lysates.



Storage:

Store at -20°C. Avoid repeated freeze / thaw cycles.