

Manufacturer/Supplier:

WUXI DONGLIN SCI&TECH DEVELOPMENT CO., LTD

Address: A1-203 Mingpin CityII, No.8 Xihudong Road, Liangxi District
Wuxi Jiangsu Province, China

TELE: 86-510-82732223

FAX: 86-510-82720101-8014

Web : www.dldevelop.com

Email: info@dldevelop.com.cn service@dldevelop.com.cn

Product name: Rabbit anti-Cytokeratin-pan Antibody

Catalog: DL95243A

Synonyms: KRT2; KRT2A; KRT2E; Keratin, type II cytoskeletal 2 epidermal; Cytokeratin-2e; CK-2e; Epithelial keratin-2e; Keratin-2 epidermis; Keratin-2e; K2e; Type-II keratin Kb2; KRT76; KRT2B; KRT2P; Keratin, type II cytoskeletal 2 oral; Cytokeratin-2P; CK-2P; K2P;

Immunogen: KLH-conjugated synthetic peptide encompassing a sequence within the center region of human Cytokeratin-pan. The exact sequence is proprietary.

Form: Liquid

Concentration: 1mg/mL

Size: 100 ul/50 ul

Host: Rabbit

Reactivity:

Human, Mouse, Rat, Bovine, Dog

Application: WB**Clonality:** Polyclonal**Dilution:** WB (1/500 - 1/2000)**Entrez Gene:**

16681; 77055; 110308/406228; 369017

SwissProt:

P35908; Q01546; P12035; P13647; P02538;
P04259; P48668; Q3SY84; Q14CN4; Q86Y46;
Q7RTS7; O95678; Q5XKE5; P08729; P05787;
Q9NSB2/Q3TTY5; Q3UV17; Q922U2/Q6IG02;
Q6P6Q2

Purification:

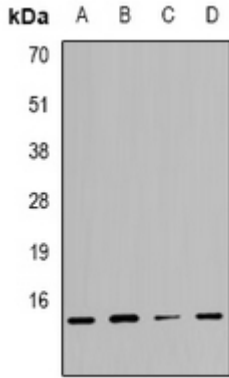
The antibody was purified by immunogen affinity chromatography.

Buffer:

Liquid in 0.42% Potassium phosphate, 0.87% Sodium chloride, pH 7.3, 30% glycerol, and 0.01% sodium azide.

WB description:

Western blot analysis of Cytokeratin-pan expression in mouse lung (A) whole cell lysates.



Storage:

Store at -20°C. Avoid repeated freeze / thaw cycles.