

Manufacturer/Supplier:

WUXI DONGLIN SCI&TECH DEVELOPMENT CO., LTD

Address: A1-203 Mingpin CityII, No.8 Xihudong Road, Liangxi District
Wuxi Jiangsu Province, China

TELE: 86-510-82732223

FAX: 86-510-82720101-8014

Web : www.dldevelop.com

Email: info@dldevelop.com.cn service@dldevelop.com.cn

Product name: Rabbit anti-Pyruvate Kinase Antibody

Catalog: DL95220A

Synonyms: OIP3; PK2; PK3; PKM2; Pyruvate kinase PKM;
Cytosolic thyroid hormone-binding protein;
CTHBP; Opa-interacting protein 3; OIP-3; Pyruvate
kinase 2/3; Pyruvate kinase muscle isozyme;
Thyroid hormone-binding protein 1; THBP1; Tumor
M2-PK; p58

Immunogen: KLH-conjugated synthetic peptide encompassing a
sequence within the center region of human
Pyruvate Kinase. The exact sequence is proprietary.

Form: Liquid

Concentration: 1mg/mL

Size: 100 ul/50 ul

Host: Rabbit

Reactivity:

Human, Mouse, Rat, RB

Application: WB**Clonality:** Polyclonal**Dilution:** WB (1/500 - 1/1000)

Entrez Gene: 5315/18746/25630

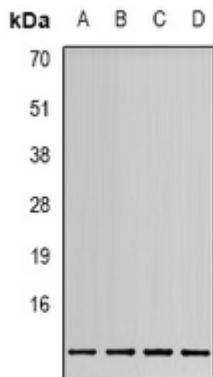
SwissProt: P14618/P52480/P11980

Purification: The antibody was purified by immunogen affinity chromatography.

Buffer: Liquid in 0.42% Potassium phosphate, 0.87% Sodium chloride, pH 7.3, 30% glycerol, and 0.01% sodium azide.

WB description:

Western blot analysis of Pyruvate Kinase expression in MCF7 (A), HepG2 (B) whole cell lysates.



Storage:

Store at -20°C. Avoid repeated freeze / thaw cycles.