

Manufacturer/Supplier:

WUXI DONGLIN SCI&TECH DEVELOPMENT CO., LTD

Address: A1-203 Mingpin CityII, No.8 Xihudong Road, Liangxi District
Wuxi Jiangsu Province, China

TELE: 86-510-82732223

FAX: 86-510-82720101-8014

Web : www.dldevelop.com

Email: info@dldevelop.com.cn service@dldevelop.com.cn

Product name: Rabbit anti-CCL27 Antibody

Catalog: DL95163A

Synonyms: ILC; SCYA27; C-C motif chemokine 27; CC chemokine ILC; Cutaneous T-cell-attracting chemokine; CTACK; ESkin; IL-11 R-alpha-locus chemokine; Skinkine; Small-inducible cytokine A27

Immunogen: KLH-conjugated synthetic peptide encompassing a sequence within the center region of human CCL27. The exact sequence is proprietary.

Form: Liquid

Concentration: 1mg/mL

Size: 100 ul/50 ul

Host: Rabbit

Reactivity: Human, Mouse

Application: WB, IHC

Clonality: Polyclonal

Dilution: WB (1/500 - 1/1000),
IHC (1/100 - 1/200)

Entrez Gene: 10850/100039863; 100039939; 100040048;
100861978; 102641963; 20301

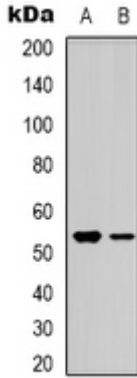
SwissProt: Q9Y4X3/Q9Z1X0

Purification: The antibody was purified by immunogen affinity chromatography.

Buffer: Liquid in 0.42% Potassium phosphate, 0.87% Sodium chloride, pH 7.3, 30% glycerol, and 0.01% sodium azide.

WB description:

Western blot analysis of CCL27 expression in mouse kidney (A) whole cell lysates.



IHC description:

Immunohistochemical analysis of CCL27 staining in human testis formalin fixed paraffin embedded tissue section. The section was pre-treated using heat mediated antigen retrieval with sodium citrate buffer (pH 6.0). The section was then incubated with the antibody at room temperature and detected using an HRP conjugated compact polymer system. DAB was used as the chromogen. The section was then counterstained with haematoxylin and mounted with DPX.

Storage:

Store at -20°C. Avoid repeated freeze / thaw cycles.