

**Manufacturer/Supplier:**

WUXI DONGLIN SCI&TECH DEVELOPMENT CO., LTD

**Address:** A1-203 Mingpin CityII, No.8 Xihudong Road. Liangxi District  
Wuxi Jiangsu Province, China

TELE: 86-510-82732223

FAX: 86-510-82720101-8014

**Web :** [www.dldevelop.com](http://www.dldevelop.com)

Email: [info@dldevelop.com.cn](mailto:info@dldevelop.com.cn)    [service@dldevelop.com.cn](mailto:service@dldevelop.com.cn)

**Product name:** Rabbit anti-p47 phox Antibody

**Catalog:** DL95003A

**Synonyms:** NOXO2; SH3PXD1A; Neutrophil cytosol factor 1;  
NCF-1; 47 kDa autosomal chronic granulomatous  
disease protein; 47 kDa neutrophil oxidase factor;  
NCF-47K; Neutrophil NADPH oxidase factor 1;  
Nox organizer 2; Nox-organizing protein 2; SH3  
and PX domain-contain

**Immunogen:** KLH-conjugated synthetic peptide encompassing a  
sequence within the C-term region of human p47  
phox. The exact sequence is proprietary.

**Form:** Liquid

**Concentration:** 1mg/mL

**Size:** 100 ul/50 ul

**Host:** Rabbit

**Reactivity:** Human, Mouse

**Application:** WB, IHC

**Clonality:** Polyclonal

**Dilution:** WB (1/500 - 1/1000),  
IHC (1/100 - 1/200)

**Entrez Gene:** 653361/17969

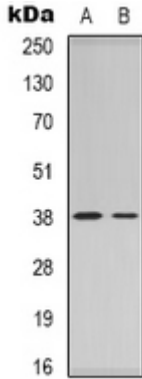
**SwissProt:** P14598/Q09014

**Purification:** The antibody was purified by immunogen affinity chromatography.

**Buffer:** Liquid in 0.42% Potassium phosphate, 0.87% Sodium chloride, pH 7.3, 30% glycerol, and 0.01% sodium azide.

**WB description:**

Western blot analysis of p47 phox expression in HEK293T (A),  
Hela (B) whole cell lysates.



### IHC description:

Immunohistochemical analysis of p47 phox staining in human lymph node formalin fixed paraffin embedded tissue section. The section was pre-treated using heat mediated antigen retrieval with sodium citrate buffer (pH 6.0). The section was then incubated with the antibody at room temperature and detected using an HRP conjugated compact polymer system. DAB was used as the chromogen. The section was then counterstained with haematoxylin and mounted with DPX.

### Storage:

Store at -20°C. Avoid repeated freeze / thaw cycles.