

**Manufacturer/Supplier:**

WUXI DONGLIN SCI&TECH DEVELOPMENT CO., LTD

**Address:** A1-203 Mingpin CityII, No.8 Xihudong Road, Liangxi District  
Wuxi Jiangsu Province, China

**TELE:** 86-510-82732223

**FAX:** 86-510-82720101-8014

**Web :** [www.dldevelop.com](http://www.dldevelop.com)

**Email:** [info@dldevelop.com.cn](mailto:info@dldevelop.com.cn)    [service@dldevelop.com.cn](mailto:service@dldevelop.com.cn)

**Product name:** Rabbit anti-SMAD2 Antibody

**Catalog:** DL94997A

**Synonyms:** MADH2; MADR2; Mothers against  
decapentaplegic homolog 2; MAD homolog 2;  
Mothers against DPP homolog 2; JV18-1;  
Mad-related protein 2; hMAD-2; SMAD family  
member 2; SMAD 2; Smad2; hSMAD2

**Immunogen:** KLH-conjugated synthetic peptide encompassing a  
sequence within the center region of human  
SMAD2. The exact sequence is proprietary.

**Form:** Liquid

**Concentration:** 1mg/mL

**Size:** 100 ul/50 ul

**Host:** Rabbit

**Reactivity:**

Human, Mouse, Rat, Bovine, Zebrafish

**Application:** WB**Clonality:** Polyclonal**Dilution:** WB (1/500 - 1/1000)

**Entrez Gene:** 4087/17126/29357

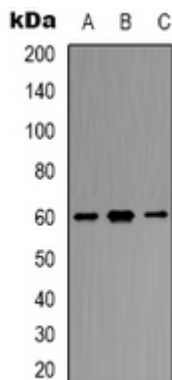
**SwissProt:** Q15796/Q62432/O70436

**Purification:** The antibody was purified by immunogen affinity chromatography.

**Buffer:** Liquid in 0.42% Potassium phosphate, 0.87% Sodium chloride, pH 7.3, 30% glycerol, and 0.01% sodium azide.

**WB description:**

Western blot analysis of SMAD2 expression in Jurkat (A), HepG2 (B), NIH3T3 (C) whole cell lysates.



**Storage:**

Store at -20°C. Avoid repeated freeze / thaw cycles.