

**Manufacturer/Supplier:**

WUXI DONGLIN SCI&TECH DEVELOPMENT CO., LTD

**Address:** A1-203 Mingpin CityII, No.8 Xihudong Road, Liangxi District  
Wuxi Jiangsu Province, China

TELE: 86-510-82732223

FAX: 86-510-82720101-8014

**Web :** [www.dldevelop.com](http://www.dldevelop.com)

Email: [info@dldevelop.com.cn](mailto:info@dldevelop.com.cn)    [service@dldevelop.com.cn](mailto:service@dldevelop.com.cn)

**Product name:** Rabbit anti-HER2 Antibody

**Catalog:** DL94995A

**Synonyms:** HER2; MLN19; NEU; NGL; Receptor  
tyrosine-protein kinase erbB-2; Metastatic lymph  
node gene 19 protein; MLN 19; Proto-oncogene  
Neu; Proto-oncogene c-ErbB-2; Tyrosine  
kinase-type cell surface receptor HER2; p185erbB2;  
CD340

**Immunogen:** KLH-conjugated synthetic peptide encompassing a  
sequence within the center region of human HER2.  
The exact sequence is proprietary.

**Form:** Liquid

**Concentration:** 1mg/mL

**Size:** 100 ul/50 ul

**Host:** Rabbit

**Reactivity:**

Human, Mouse, Rat, Dog

**Application:** WB, IHC**Clonality:** Polyclonal

**Dilution:** WB (1/500 - 1/1000),  
IHC (1/100 - 1/200)

**Entrez Gene:**

2064/13866

**SwissProt:**

P04626/P70424/P06494

**Purification:**

The antibody was purified by immunogen affinity chromatography.

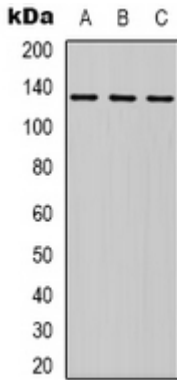
**Buffer:**

Liquid in 0.42% Potassium phosphate, 0.87% Sodium chloride, pH 7.3, 30% glycerol, and 0.01% sodium azide.

**WB description:**

Western blot analysis of HER2 expression in PC3 (A), MCF7 (B), NIH3T3 (C) whole cell lysates.





### IHC description:

Immunohistochemical analysis of HER2 staining in human breast cancer formalin fixed paraffin embedded tissue section. The section was pre-treated using heat mediated antigen retrieval with sodium citrate buffer (pH 6.0). The section was then incubated with the antibody at room temperature and detected using an HRP conjugated compact polymer system. DAB was used as the chromogen. The section was then counterstained with haematoxylin and mounted with DPX.

### Storage:

Store at -20°C. Avoid repeated freeze / thaw cycles.