

Manufacturer/Supplier:

WUXI DONGLIN SCI&TECH DEVELOPMENT CO., LTD

Address: A1-203 Mingpin CityII, No.8 Xihudong Road, Liangxi District
Wuxi Jiangsu Province, China

TELE: 86-510-82732223

FAX: 86-510-82720101-8014

Web : www.dldevelop.com

Email: info@dldevelop.com.cn service@dldevelop.com.cn

Product name: Rabbit anti-MSK1 (pS212) Antibody

Catalog: DL94977A

Synonyms: MSK1; Ribosomal protein S6 kinase alpha-5;
S6K-alpha-5; 90 kDa ribosomal protein S6 kinase 5;
Nuclear mitogen- and stress-activated protein kinase
1; RSK-like protein kinase; RSKL

Immunogen: KLH-conjugated synthetic peptide encompassing a
sequence within the center region of human MSK1
(pS212). The exact sequence is proprietary.

Form: Liquid

Concentration: 1mg/mL

Size: 100 ul/50 ul

Host: Rabbit

Reactivity: Human, Mouse

Application: WB, IHC

Clonality: Polyclonal

Dilution: WB (1/500 - 1/1000),
IHC (1/100 - 1/200)

Entrez Gene: 9252/73086

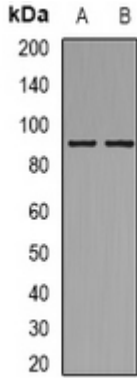
SwissProt: O75582/Q8C050

Purification: The antibody was purified by immunogen affinity chromatography.

Buffer: Liquid in 0.42% Potassium phosphate, 0.87% Sodium chloride, pH 7.3, 30% glycerol, and 0.01% sodium azide.

WB description:

Western blot analysis of MSK1 (pS212) expression in SHSY5Y (A), NIH3T3 (B) whole cell lysates.



IHC description:

Immunohistochemical analysis of MSK1 (pS212) staining in human prostate cancer formalin fixed paraffin embedded tissue section. The section was pre-treated using heat mediated antigen retrieval with sodium citrate buffer (pH 6.0). The section was then incubated with the antibody at room temperature and detected using an HRP conjugated compact polymer system. DAB was used as the chromogen. The section was then counterstained with haematoxylin and mounted with DPX.

Storage:

Store at -20°C. Avoid repeated freeze / thaw cycles.