

**Manufacturer/Supplier:**

WUXI DONGLIN SCI&TECH DEVELOPMENT CO., LTD

**Address:** A1-203 Mingpin CityII, No.8 Xihudong Road, Liangxi District  
Wuxi Jiangsu Province, China

TELE: 86-510-82732223

FAX: 86-510-82720101-8014

**Web :** [www.dldevelop.com](http://www.dldevelop.com)

Email: [info@dldevelop.com.cn](mailto:info@dldevelop.com.cn)    [service@dldevelop.com.cn](mailto:service@dldevelop.com.cn)

**Product name:** Rabbit anti-IKB alpha (pY42) Antibody

**Catalog:** DL94956A

**Synonyms:** IKBA; MAD3; NFKBI; NF-kappa-B inhibitor  
alpha; I-kappa-B-alpha; IkB-alpha; IkappaBalpha;  
Major histocompatibility complex enhancer-binding  
protein MAD3

**Immunogen:** KLH-conjugated synthetic peptide encompassing a  
sequence within the N-term region of human IKB  
alpha (pY42). The exact sequence is proprietary.

**Form:** Liquid

**Concentration:** 1mg/mL

**Size:** 100 ul/50 ul

**Host:** Rabbit

**Reactivity:**

**Application:** WB, IHC

Human, Mouse, Rat, Bovine, Monkey, Pig, Sheep

**Clonality:** Polyclonal

**Dilution:** WB (1/500 - 1/1000),  
IHC (1/100 - 1/200)

**Entrez Gene:** 4792/18035/25493

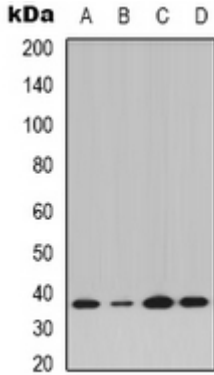
**SwissProt:** P25963/Q9Z1E3/Q63746

**Purification:** The antibody was purified by immunogen affinity chromatography.

**Buffer:** Liquid in 0.42% Potassium phosphate, 0.87% Sodium chloride, pH 7.3, 30% glycerol, and 0.01% sodium azide.

**WB description:**

Western blot analysis of IKB alpha (pY42) expression in K562 (A), Jurkat IL1b-treated (B), Raw264.7 LPS-treated (C), H9C2 LPS-treated (D) whole cell lysates.



### IHC description:

Immunohistochemical analysis of IKB alpha (pY42) staining in human breast cancer formalin fixed paraffin embedded tissue section. The section was pre-treated using heat mediated antigen retrieval with sodium citrate buffer (pH 6.0). The section was then incubated with the antibody at room temperature and detected using an HRP conjugated compact polymer system. DAB was used as the chromogen. The section was then counterstained with haematoxylin and mounted with DPX.

### Storage:

Store at -20°C. Avoid repeated freeze / thaw cycles.