

Manufacturer/Supplier:

WUXI DONGLIN SCI&TECH DEVELOPMENT CO., LTD

Address: A1-203 Mingpin CityII, No.8 Xihudong Road, Liangxi District
Wuxi Jiangsu Province, China

TELE: 86-510-82732223

FAX: 86-510-82720101-8014

Web : www.dldevelop.com

Email: info@dldevelop.com.cn service@dldevelop.com.cn

Product name: Rabbit anti-RUNX1 Antibody

Catalog: DL94946A

Synonyms: AML1; CBFA2; Runt-related transcription factor 1;
Acute myeloid leukemia 1 protein; Core-binding
factor subunit alpha-2; CBF-alpha-2; Oncogene
AML-1; Polyomavirus enhancer-binding protein 2
alpha B subunit; PEA2-alpha B; PEBP2-alpha B;
SL3-3 enhancer fact

Immunogen: KLH-conjugated synthetic peptide encompassing a
sequence within the center region of human
RUNX1. The exact sequence is proprietary.

Form: Liquid

Concentration: 1mg/mL

Size: 100 ul/50 ul

Host: Rabbit

Reactivity: Human, Mouse, Rat

Application: WB, IHC

Clonality: Polyclonal

Dilution: WB (1/500 - 1/1000),
IHC (1/100 - 1/200)

Entrez Gene: 861/50662

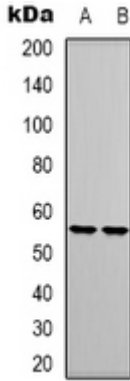
SwissProt: Q01196/Q03347/Q63046

Purification: The antibody was purified by immunogen affinity chromatography.

Buffer: Liquid in 0.42% Potassium phosphate, 0.87% Sodium chloride, pH 7.3, 30% glycerol, and 0.01% sodium azide.

WB description:

Western blot analysis of RUNX1 expression in Jurkat (A), THP1 (B) whole cell lysates.



IHC description:

Immunohistochemical analysis of RUNX1 staining in human breast cancer formalin fixed paraffin embedded tissue section. The section was pre-treated using heat mediated antigen retrieval with sodium citrate buffer (pH 6.0). The section was then incubated with the antibody at room temperature and detected using an HRP conjugated compact polymer system. DAB was used as the chromogen. The section was then counterstained with haematoxylin and mounted with DPX.

Storage:

Store at -20°C. Avoid repeated freeze / thaw cycles.