

**Manufacturer/Supplier:**

WUXI DONGLIN SCI&TECH DEVELOPMENT CO., LTD

**Address:** A1-203 Mingpin CityII, No.8 Xihudong Road, Liangxi District  
Wuxi Jiangsu Province, China

TELE: 86-510-82732223

FAX: 86-510-82720101-8014

**Web :** [www.dldevelop.com](http://www.dldevelop.com)

Email: [info@dldevelop.com.cn](mailto:info@dldevelop.com.cn) [service@dldevelop.com.cn](mailto:service@dldevelop.com.cn)

**Product name:** Rabbit anti-Glucocorticoid Receptor Antibody

**Catalog:** DL94890A

**Synonyms:** GRL; Glucocorticoid receptor; GR; Nuclear  
receptor subfamily 3 group C member 1

**Immunogen:** KLH-conjugated synthetic peptide encompassing a  
sequence within the center region of human  
Glucocorticoid Receptor. The exact sequence is  
proprietary.

**Form:** Liquid

**Concentration:** 1mg/mL

**Size:** 100 ul/50 ul

**Host:** Rabbit

**Reactivity:**  
Human, Mouse, Rat, RB, Sheep

**Application:** WB, IHC, IF/IC, IP

**Clonality:** Monoclonal

**Dilution:** WB (1/1000 - 1/2000),  
IHC (1/100 - 1/200)

**Entrez Gene:** 11863

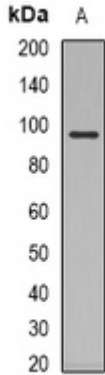
**SwissProt:** P53762

**Purification:**

**Buffer:** Liquid in 0.42% Potassium phosphate, 0.87% Sodium chloride, pH 7.3, 30% glycerol, and 0.01% sodium azide.

**WB description:**

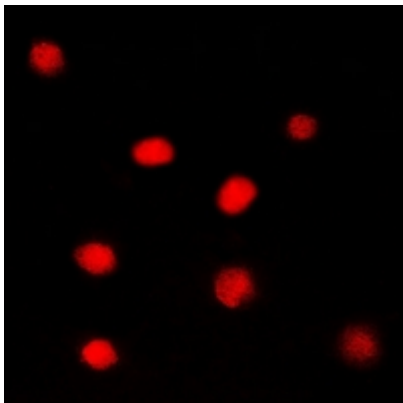
Western blot analysis of HIF1 beta expression in mouse brain (A) whole cell lysates.



### IHC description:

Immunohistochemical analysis of HIF1 beta staining in mouse brain formalin fixed paraffin embedded tissue section. The section was pre-treated using heat mediated antigen retrieval with sodium citrate buffer (pH 6.0). The section was then incubated with the antibody at room temperature and detected using an HRP conjugated compact polymer system. DAB was used as the chromogen. The section was then counterstained with haematoxylin and mounted with DPX.

### IF/ICC description:



**IP description:**

**Storage:**

Store at -20°C. Avoid repeated freeze / thaw cycles.