

Manufacturer/Supplier:

WUXI DONGLIN SCI&TECH DEVELOPMENT CO., LTD

Address: A1-203 Mingpin CityII, No.8 Xihudong Road. Liangxi District
Wuxi Jiangsu Province, China

TELE: 86-510-82732223

FAX: 86-510-82720101-8014

Web : www.dldevelop.com

Email: info@dldevelop.com.cn service@dldevelop.com.cn

Product name: Rabbit anti-Rpb1 CTD Antibody

Catalog: DL94888A

Synonyms: POLR2; DNA-directed RNA polymerase II subunit
RPB1; RNA polymerase II subunit B1;
DNA-directed RNA polymerase II subunit A;
DNA-directed RNA polymerase III largest subunit;
RNA-directed RNA polymerase II subunit RPB1

Immunogen: KLH-conjugated synthetic peptide encompassing a
sequence within the C-term region of human Rpb1
CTD. The exact sequence is proprietary.

Form: Liquid

Concentration: 1mg/mL

Size: 100 ul/50 ul

Host: Rabbit

Reactivity:

Human, Mouse, Rat, Dog, Monkey,
Zebrafish

Application: WB, IHC, IF/IC**Clonality:** Polyclonal

Dilution: WB (1/500 - 1/1000),
IHC (1/100 - 1/200), IF/IC (1/100 -
1/500)

Entrez Gene: 5430

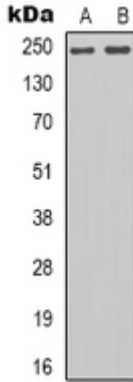
SwissProt: P24928/P08775

Purification: The antibody was purified by immunogen affinity chromatography.

Buffer: Liquid in 0.42% Potassium phosphate, 0.87% Sodium chloride, pH 7.3, 30% glycerol, and 0.01% sodium azide.

WB description:

Western blot analysis of Rpb1 CTD expression in MCF7 (A), MDAMB435 (B) whole cell lysates.

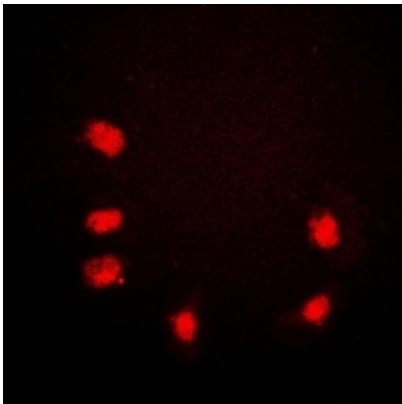


IHC description:

Immunohistochemical analysis of Rpb1 CTD staining in human colon cancer formalin fixed paraffin embedded tissue section. The section was pre-treated using heat mediated antigen retrieval with sodium citrate buffer (pH 6.0). The section was then incubated with the antibody at room temperature and detected using an HRP conjugated compact polymer system. DAB was used as the chromogen. The section was then counterstained with haematoxylin and mounted with DPX.

IF/ICC description:

Immunofluorescent analysis of Rpb1 CTD staining in HeLa cells. Formalin-fixed cells were permeabilized with 0.1% Triton X-100 in TBS for 5-10 minutes and blocked with 3% BSA-PBS for 30 minutes at room temperature. Cells were probed with the primary antibo



Storage:

Store at -20°C. Avoid repeated freeze / thaw cycles.