

Manufacturer/Supplier:

WUXI DONGLIN SCI&TECH DEVELOPMENT CO., LTD

Address: A1-203 Mingpin CityII, No.8 Xihudong Road. Liangxi District
Wuxi Jiangsu Province, China

TELE: 86-510-82732223

FAX: 86-510-82720101-8014

Web : www.dldevelop.com

Email: info@dldevelop.com.cn service@dldevelop.com.cn

Product name: Rabbit anti-HER2 Antibody

Catalog: DL94877A

Synonyms: HER2; MLN19; NEU; NGL; Receptor
tyrosine-protein kinase erbB-2; Metastatic lymph
node gene 19 protein; MLN 19; Proto-oncogene
Neu; Proto-oncogene c-ErbB-2; Tyrosine
kinase-type cell surface receptor HER2; p185erbB2;
CD340

Immunogen: KLH-conjugated synthetic peptide encompassing a
sequence within the center region of human HER2.
The exact sequence is proprietary.

Form: Liquid

Concentration: 1mg/mL

Size: 100 ul/50 ul

Host: Rabbit

Reactivity:

Human, Mouse, Rat, Dog

Application: WB, IHC, IF/IC**Clonality:** Polyclonal

Dilution: WB (1/500 - 1/1000),
IHC (1/100 - 1/200), IF/IC (1/100 -
1/500)

Entrez Gene:

2064/13866

SwissProt:

P04626/P70424/P06494

Purification:

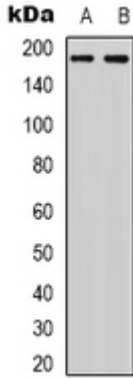
The antibody was purified by immunogen affinity chromatography.

Buffer:

Liquid in 0.42% Potassium phosphate, 0.87% Sodium chloride, pH 7.3, 30% glycerol, and 0.01% sodium azide.

WB description:

Western blot analysis of HER2 expression in Jurkat (A), HepG2 (B) whole cell lysates.

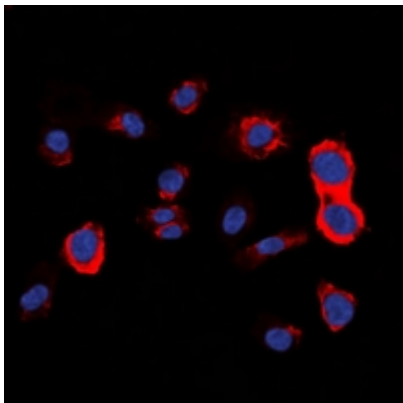


IHC description:

Immunohistochemical analysis of HER2 staining in human breast cancer formalin fixed paraffin embedded tissue section. The section was pre-treated using heat mediated antigen retrieval with sodium citrate buffer (pH 6.0). The section was then incubated with the antibody at room temperature and detected using an HRP conjugated compact polymer system. DAB was used as the chromogen. The section was then counterstained with haematoxylin and mounted with DPX.

IF/ICC description:

Immunofluorescent analysis of HER2 staining in HepG2 cells. Formalin-fixed cells were permeabilized with 0.1% Triton X-100 in TBS for 5-10 minutes and blocked with 3% BSA-PBS for 30 minutes at room temperature. Cells were probed with the primary antibody



Storage:

Store at -20°C. Avoid repeated freeze / thaw cycles.