

Manufacturer/Supplier:

WUXI DONGLIN SCI&TECH DEVELOPMENT CO., LTD

Address: A1-203 Mingpin CityII, No.8 Xihudong Road, Liangxi District
Wuxi Jiangsu Province, China

TELE: 86-510-82732223

FAX: 86-510-82720101-8014

Web : www.dldevelop.com

Email: info@dldevelop.com.cn service@dldevelop.com.cn

Product name: Rabbit anti-ROR gamma Antibody

Catalog: DL94831A

Synonyms: NR1F3; RORG; RZRG; Nuclear receptor
ROR-gamma; Nuclear receptor RZR-gamma;
Nuclear receptor subfamily 1 group F member 3;
RAR-related orphan receptor C; Retinoid-related
orphan receptor-gamma

Immunogen: KLH-conjugated synthetic peptide encompassing a
sequence within the center region of human ROR
gamma. The exact sequence is proprietary.

Form: Liquid

Concentration: 1mg/mL

Size: 100 ul/50 ul

Host: Rabbit

Reactivity: Human, Mouse

Application: WB

Clonality: Polyclonal

Dilution: WB (1/500 - 1/1000)

Entrez Gene: 6097/19885

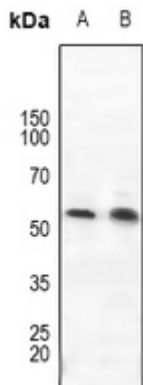
SwissProt: P51449/P51450

Purification: The antibody was purified by immunogen affinity chromatography.

Buffer: Liquid in 0.42% Potassium phosphate, 0.87% Sodium chloride, pH 7.3, 30% glycerol, and 0.01% sodium azide.

WB description:

Western blot analysis of ROR gamma expression in HEK293T (A), Hela (B) whole cell lysates.



Storage:

Store at -20°C. Avoid repeated freeze / thaw cycles.