

Manufacturer/Supplier:

WUXI DONGLIN SCI&TECH DEVELOPMENT CO., LTD

Address: A1-203 Mingpin CityII, No.8 Xihudong Road, Liangxi District
Wuxi Jiangsu Province, China

TELE: 86-510-82732223

FAX: 86-510-82720101-8014

Web : www.dldevelop.com

Email: info@dldevelop.com.cn service@dldevelop.com.cn

Product name: Rabbit anti-FKSG1 Antibody

Catalog: DL94826A

Synonyms: GY2; KIAA1645; WDR14; Guanine nucleotide-binding protein subunit beta-like protein 1; G protein subunit beta-like protein 1; DGCRK3; WD repeat-containing protein 14; WD40 repeat-containing protein deleted in VCFS; WDVCF

Immunogen: KLH-conjugated synthetic peptide encompassing a sequence within the C-term region of human FKSG1. The exact sequence is proprietary.

Form: Liquid

Concentration: 1mg/mL

Size: 100 ul/50 ul

Host: Rabbit

Reactivity: Human, Mouse, Rat

Application: WB

Clonality: Polyclonal

Dilution: WB (1/500 - 1/1000)

Entrez Gene: 54584/13972

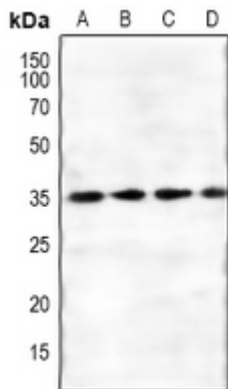
SwissProt: Q9BYB4/Q9EQ15

Purification: The antibody was purified by immunogen affinity chromatography.

Buffer: Liquid in 0.42% Potassium phosphate, 0.87% Sodium chloride, pH 7.3, 30% glycerol, and 0.01% sodium azide.

WB description:

Western blot analysis of FKSG1 expression in mouse kidney (A), rat kidney (B), mouse heart (C), rat heart (D) whole cell lysates.

**Storage:**

Store at -20°C. Avoid repeated freeze / thaw cycles.