

Manufacturer/Supplier:

WUXI DONGLIN SCI&TECH DEVELOPMENT CO., LTD

Address: A1-203 Mingpin CityII, No.8 Xihudong Road. Liangxi District
Wuxi Jiangsu Province, China

TELE: 86-510-82732223

FAX: 86-510-82720101-8014

Web : www.dldevelop.com

Email: info@dldevelop.com.cn service@dldevelop.com.cn

Product name: Rabbit anti-Girdin Antibody

Catalog: DL94810A

Synonyms: APE; GRDN; KIAA1212; Girdin; Akt phosphorylation enhancer; APE; Coiled-coil domain-containing protein 88A; G alpha-interacting vesicle-associated protein; GIV; Girders of actin filament; Hook-related protein 1; HkRP1

Immunogen: KLH-conjugated synthetic peptide encompassing a sequence within the center region of human Girdin. The exact sequence is proprietary.

Form: Liquid

Concentration: 1mg/mL

Size: 100 ul/50 ul

Host: Rabbit

Reactivity: Human, Mouse, Rat

Application: WB, IHC

Clonality: Polyclonal

Dilution: WB (1/500 - 1/1000),
IHC (1/50 - 1/100)

Entrez Gene: 55704/108686

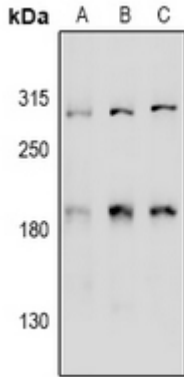
SwissProt: Q3V6T2/Q5SNZ0

Purification: The antibody was purified by immunogen affinity chromatography.

Buffer: Liquid in 0.42% Potassium phosphate, 0.87% Sodium chloride, pH 7.3, 30% glycerol, and 0.01% sodium azide.

WB description:

Western blot analysis of Girdin expression in K562 (A), CT26 (B), rat testis (C) whole cell lysates.



IHC description:

Immunohistochemical analysis of Girdin staining in human brain formalin fixed paraffin embedded tissue section. The section was pre-treated using heat mediated antigen retrieval with sodium citrate buffer (pH 6.0). The section was then incubated with the antibody at room temperature and detected using an HRP conjugated compact polymer system. DAB was used as the chromogen. The section was then counterstained with haematoxylin and mounted with DPX.

Storage:

Store at -20°C. Avoid repeated freeze / thaw cycles.