

Manufacturer/Supplier:

WUXI DONGLIN SCI&TECH DEVELOPMENT CO., LTD

Address: A1-203 Mingpin CityII, No.8 Xihudong Road, Liangxi District
Wuxi Jiangsu Province, China

TELE: 86-510-82732223

FAX: 86-510-82720101-8014

Web : www.dldevelop.com

Email: info@dldevelop.com.cn service@dldevelop.com.cn

Product name: Rabbit anti-Estrogen Receptor alpha Antibody

Catalog: DL94803A

Synonyms: ESR; NR3A1; Estrogen receptor; ER; ER-alpha;
Estradiol receptor; Nuclear receptor subfamily 3
group A member 1

Immunogen: KLH-conjugated synthetic peptide encompassing a
sequence within the center region of human
Estrogen Receptor alpha. The exact sequence is
proprietary.

Form: Liquid

Concentration: 1mg/mL

Size: 100 ul/50 ul

Host: Rabbit

Reactivity:

Application: WB, IHC

Human, Mouse, Rat, Bovine, Pig

Clonality: Polyclonal

Dilution: WB (1/500 - 1/1000),
IHC (1/50 - 1/100)

Entrez Gene: 2099/13982/24890

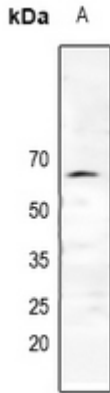
SwissProt: P03372/P19785/P06211

Purification: The antibody was purified by immunogen affinity chromatography.

Buffer: Liquid in 0.42% Potassium phosphate, 0.87% Sodium chloride, pH 7.3, 30% glycerol, and 0.01% sodium azide.

WB description:

Western blot analysis of Estrogen Receptor alpha expression in K562 (A) whole cell lysates.



IHC description:

Immunohistochemical analysis of Estrogen Receptor alpha staining in human breast cancer formalin fixed paraffin embedded tissue section. The section was pre-treated using heat mediated antigen retrieval with sodium citrate buffer (pH 6.0). The section was then incubated with the antibody at room temperature and detected using an HRP conjugated compact polymer system. DAB was used as the chromogen. The section was then counterstained with haematoxylin and mounted with DPX.

Storage:

Store at -20°C. Avoid repeated freeze / thaw cycles.