

Manufacturer/Supplier:

WUXI DONGLIN SCI&TECH DEVELOPMENT CO., LTD

Address: A1-203 Mingpin CityII, No.8 Xihudong Road, Liangxi District
Wuxi Jiangsu Province, China

TELE: 86-510-82732223

FAX: 86-510-82720101-8014

Web : www.dldevelop.com

Email: info@dldevelop.com.cn service@dldevelop.com.cn

Product name: Rabbit anti-CDK9 (pT186) Antibody

Catalog: DL94753A

Synonyms: CDC2L4; TAK; Cyclin-dependent kinase 9; C-2K;
Cell division cycle 2-like protein kinase 4; Cell
division protein kinase 9; Serine/threonine-protein
kinase PITALRE; Tat-associated kinase complex
catalytic subunit

Immunogen: KLH-conjugated synthetic peptide encompassing a
sequence within the center region of human CDK9.
The exact sequence is proprietary.

Form: Liquid

Concentration: 1mg/mL

Size: 100 ul/50 ul

Host: Rabbit

Reactivity:

Human, Mouse, Rat, Bovine, Chicken, Pig

Application: WB**Clonality:** Polyclonal**Dilution:** WB (1/500 - 1/1000)

Entrez Gene: 1025/107951/362110

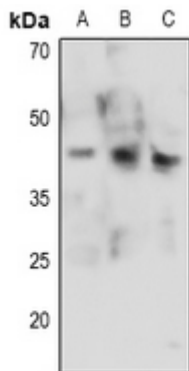
SwissProt: P50750/Q99J95/Q641Z4

Purification: The antibody was purified by immunogen affinity chromatography.

Buffer: Liquid in 0.42% Potassium phosphate, 0.87% Sodium chloride, pH 7.3, 30% glycerol, and 0.01% sodium azide.

WB description:

Western blot analysis of CDK9 (pT186) expression in PC3 (A), mouse liver (B), rat liver (C) whole cell lysates.



Storage:

Store at -20°C. Avoid repeated freeze / thaw cycles.