

Manufacturer/Supplier:

WUXI DONGLIN SCI&TECH DEVELOPMENT CO., LTD

Address: A1-203 Mingpin CityII, No.8 Xihudong Road, Liangxi District
Wuxi Jiangsu Province, China

TELE: 86-510-82732223

FAX: 86-510-82720101-8014

Web : www.dldevelop.com

Email: info@dldevelop.com.cn service@dldevelop.com.cn

Product name: Rabbit anti-TPH1 (pS58) Antibody

Catalog: DL94752A

Synonyms: TPH; TPRH; TRPH; Tryptophan 5-hydroxylase 1;
Tryptophan 5-monoxygenase 1

Immunogen: KLH-conjugated synthetic peptide encompassing a
sequence within the N-term region of human TPH1.
The exact sequence is proprietary.

Form: Liquid

Concentration: 1mg/mL

Size: 100 ul/50 ul

Host: Rabbit

Reactivity:

Human, Mouse, Rat, Chicken, Rabbit

Application: WB, IHC

t

Clonality: Polyclonal

Dilution: WB (1/500 - 1/1000),
IHC (1/50 - 1/100)

Entrez Gene: 7166/21990/24848

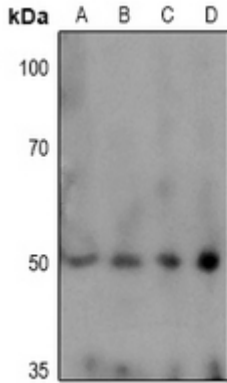
SwissProt: P17752/P17532/P09810

Purification: The antibody was purified by immunogen affinity chromatography.

Buffer: Liquid in 0.42% Potassium phosphate, 0.87% Sodium chloride, pH 7.3, 30% glycerol, and 0.01% sodium azide.

WB description:

Western blot analysis of TPH1 (pS58) expression in HEK293T (A), THP1 (B), MCF7 (C), SGC7901 (D) whole cell lysates.



IHC description:

Immunohistochemical analysis of TPH1 (pS58) staining in human brain formalin fixed paraffin embedded tissue section. The section was pre-treated using heat mediated antigen retrieval with sodium citrate buffer (pH 6.0). The section was then incubated with the antibody at room temperature and detected using an HRP conjugated compact polymer system. DAB was used as the chromogen. The section was then counterstained with haematoxylin and mounted with DPX.

Storage:

Store at -20°C. Avoid repeated freeze / thaw cycles.