

Manufacturer/Supplier:

WUXI DONGLIN SCI&TECH DEVELOPMENT CO., LTD

Address: A1-203 Mingpin CityII, No.8 Xihudong Road, Liangxi District
Wuxi Jiangsu Province, China

TELE: 86-510-82732223

FAX: 86-510-82720101-8014

Web : www.dldevelop.com

Email: info@dldevelop.com.cn service@dldevelop.com.cn

Product name: Rabbit anti-p57 Kip2 (pT310) Antibody

Catalog: DL94751A

Synonyms: KIP2; Cyclin-dependent kinase inhibitor 1C;
Cyclin-dependent kinase inhibitor p57; p57Kip2

Immunogen: KLH-conjugated synthetic peptide encompassing a
sequence within the C-term region of human p57
Kip2. The exact sequence is proprietary.

Form: Liquid

Concentration: 1mg/mL

Size: 100 ul/50 ul

Host: Rabbit

Reactivity: Human, Mouse

Application: WB, IHC, IF/IC

Clonality: Polyclonal

Dilution: WB (1/500 - 1/1000),

IHC (1/50 - 1/100), IF/IC (1/100 - 1/500)

Entrez Gene: 1028/12577

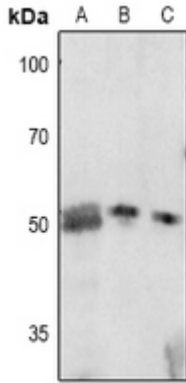
SwissProt: P49918/P49919

Purification: The antibody was purified by immunogen affinity chromatography.

Buffer: Liquid in 0.42% Potassium phosphate, 0.87% Sodium chloride, pH 7.3, 30% glycerol, and 0.01% sodium azide.

WB description:

Western blot analysis of p57 Kip2 (pT310) expression in K562 (A), Hela (B), HEK293T (C) whole cell lysates.

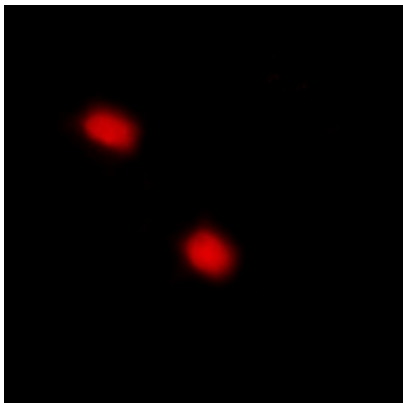


IHC description:

Immunohistochemical analysis of p57 Kip2 (pT310) staining in human prostate cancer formalin fixed paraffin embedded tissue section. The section was pre-treated using heat mediated antigen retrieval with sodium citrate buffer (pH 6.0). The section was then incubated with the antibody at room temperature and detected using an HRP conjugated compact polymer system. DAB was used as the chromogen. The section was then counterstained with haematoxylin and mounted with DPX.

IF/ICC description:

Immunofluorescent analysis of p57 Kip2 (pT310) staining in HuvEc cells. Formalin-fixed cells were permeabilized with 0.1% Triton X-100 in TBS for 5-10 minutes and blocked with 3% BSA-PBS for 30 minutes at room temperature. Cells were probed with the prima



Storage:

Store at -20°C. Avoid repeated freeze / thaw cycles.