

Manufacturer/Supplier:

WUXI DONGLIN SCI&TECH DEVELOPMENT CO., LTD

Address: A1-203 Mingpin CityII, No.8 Xihudong Road, Liangxi District
Wuxi Jiangsu Province, China

TELE: 86-510-82732223

FAX: 86-510-82720101-8014

Web : www.dldevelop.com

Email: info@dldevelop.com.cn service@dldevelop.com.cn

Product name: Rabbit anti-PTEN (pS385) Antibody

Catalog: DL94742A

Synonyms: MMAC1; TEP1; Phosphatidylinositol
345-trisphosphate 3-phosphatase and
dual-specificity protein phosphatase PTEN; Mutated
in multiple advanced cancers 1; Phosphatase and
tensin homolog

Immunogen: KLH-conjugated synthetic peptide encompassing a
sequence within the C-term region of human PTEN.
The exact sequence is proprietary.

Form: Liquid

Concentration: 1mg/mL

Size: 100 ul/50 ul

Host: Rabbit

Reactivity:

Human, Mouse, Rat, Dog, Monkey,
Pig

Application: WB, IHC**Clonality:** Polyclonal

Dilution: WB (1/500 - 1/1000),
IHC (1/50 - 1/100)

Entrez Gene: 5728/19211

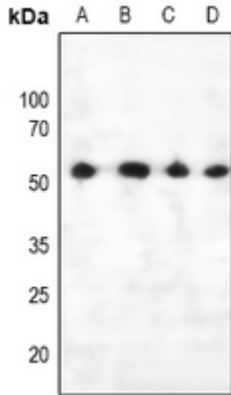
SwissProt: P60484/O08586

Purification: The antibody was purified by immunogen affinity chromatography.

Buffer: Liquid in 0.42% Potassium phosphate, 0.87% Sodium chloride, pH 7.3, 30% glycerol, and 0.01% sodium azide.

WB description:

Western blot analysis of PTEN (pS385) expression in A549 (A), THP1 (B), mouse spleen (C), Raw264.7 (D) whole cell lysates.



IHC description:

Immunohistochemical analysis of PTEN (pS385) staining in human lung cancer formalin fixed paraffin embedded tissue section. The section was pre-treated using heat mediated antigen retrieval with sodium citrate buffer (pH 6.0). The section was then incubated with the antibody at room temperature and detected using an HRP conjugated compact polymer system. DAB was used as the chromogen. The section was then counterstained with haematoxylin and mounted with DPX.

Storage:

Store at -20°C. Avoid repeated freeze / thaw cycles.