

Manufacturer/Supplier:

WUXI DONGLIN SCI&TECH DEVELOPMENT CO., LTD

Address: A1-203 Mingpin CityII, No.8 Xihudong Road, Liangxi District
Wuxi Jiangsu Province, China

TELE: 86-510-82732223

FAX: 86-510-82720101-8014

Web : www.dldevelop.com

Email: info@dldevelop.com.cn service@dldevelop.com.cn

Product name: Rabbit anti-CaMK2 alpha/beta/delta (pT305)
Antibody

Catalog: DL94734A

Synonyms: CAMK2A; CAMKA; KIAA0968;
Calcium/calmodulin-dependent protein kinase type
II subunit alpha; CaM kinase II subunit alpha;
CaMK-II subunit alpha; CAMK2B; CAM2;
CAMK2; CAMKB; Calcium/calmodulin-dependent
protein kinase type II subunit beta; CaM kinase II
sub

Immunogen: KLH-conjugated synthetic peptide encompassing a
sequence within the center region of human CaMK2
alpha/beta/delta. The exact sequence is proprietary.

Form: Liquid

Concentration: 1mg/mL

Size: 100 ul/50 ul

Host: Rabbit

Reactivity:

Human, Mouse, Rat, Bovine, Chicken, Pig, Rabbit, Zebrafish

Application: WB, IHC

Clonality: Polyclonal

Dilution: WB (1/500 - 1/1000),
IHC (1/50 - 1/100)

Entrez Gene: 12322; 12323; 108058/25400; 24245; 24246

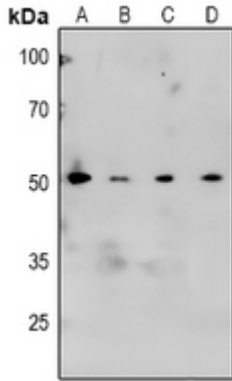
SwissProt: Q9UQM7; Q13554; Q13557/P11798; P28652;
Q6PHZ2/P11275; P08413; P15791

Purification: The antibody was purified by immunogen affinity chromatography.

Buffer: Liquid in 0.42% Potassium phosphate, 0.87% Sodium chloride, pH 7.3, 30% glycerol, and 0.01% sodium azide.

WB description:

Western blot analysis of CaMK2 alpha/beta/delta (pT305) expression in HEK293T (A), U87MG (B), A549 (C), rat brain (D) whole cell lysates.



IHC description:

Immunohistochemical analysis of CaMK2 alpha/beta/delta (pT305) staining in human brain formalin fixed paraffin embedded tissue section. The section was pre-treated using heat mediated antigen retrieval with sodium citrate buffer (pH 6.0). The section was then incubated with the antibody at room temperature and detected using an HRP conjugated compact polymer system. DAB was used as the chromogen. The section was then counterstained with haematoxylin and mounted with DPX.

Storage:

Store at -20°C. Avoid repeated freeze / thaw cycles.