

Manufacturer/Supplier:

WUXI DONGLIN SCI&TECH DEVELOPMENT CO., LTD

Address: A1-203 Mingpin CityII, No.8 Xihudong Road, Liangxi District
Wuxi Jiangsu Province, China

TELE: 86-510-82732223

FAX: 86-510-82720101-8014

Web : www.dldevelop.com

Email: info@dldevelop.com.cn service@dldevelop.com.cn

Product name: Rabbit anti-OUTB1 Antibody

Catalog: DL94733A

Synonyms: OTB1; OTU1; Ubiquitin thioesterase OTUB1;
Deubiquitinating enzyme OTUB1; OTU
domain-containing ubiquitin aldehyde-binding
protein 1; Otubain-1; hOTU1;
Ubiquitin-specific-processing protease OTUB1

Immunogen: KLH-conjugated synthetic peptide encompassing a
sequence within the C-term region of human
OUTB1. The exact sequence is proprietary.

Form: Liquid

Concentration: 1mg/mL

Size: 100 ul/50 ul

Host: Rabbit

Reactivity: Human, Mouse, Rat

Application: WB

Clonality: Polyclonal

Dilution: WB (1/500 - 1/1000)

Entrez Gene: 55611/107260/293705

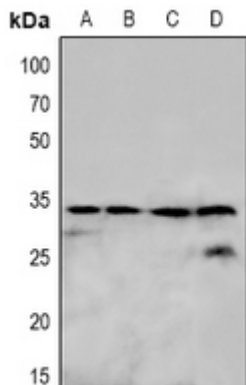
SwissProt: Q96FW1/Q7TQI3/B2RYG6

Purification: The antibody was purified by immunogen affinity chromatography.

Buffer: Liquid in 0.42% Potassium phosphate, 0.87% Sodium chloride, pH 7.3, 30% glycerol, and 0.01% sodium azide.

WB description:

Western blot analysis of OUTB1 expression in Hela (A), HEK293T (B), NIH3T3 (C), mouse brain (D) whole cell lysates.

**Storage:**

Store at -20°C. Avoid repeated freeze / thaw cycles.