

Manufacturer/Supplier:

WUXI DONGLIN SCI&TECH DEVELOPMENT CO., LTD

Address: A1-203 Mingpin CityII, No.8 Xihudong Road, Liangxi District
Wuxi Jiangsu Province, China

TELE: 86-510-82732223

FAX: 86-510-82720101-8014

Web : www.dldevelop.com

Email: info@dldevelop.com.cn service@dldevelop.com.cn

Product name: Rabbit anti-Cytokeratin-5/6 Antibody

Catalog: DL94724A

Synonyms: Keratin type II cytoskeletal 5; 58 kDa cytokeratin;
Cytokeratin-5; CK-5; Keratin-5; K5; Type-II keratin
Kb5

Immunogen: KLH-conjugated synthetic peptide encompassing a
sequence within the center region of human
Cytokeratin-5/6. The exact sequence is proprietary.

Form: Liquid

Concentration: 1mg/mL

Size: 100 ul/50 ul

Host: Rabbit

Reactivity:
Human, Mouse, Rat, Bovine

Application: WB

Clonality: Polyclonal

Dilution: WB (1/500 - 1/1000)

Entrez Gene: 3852/110308/369017

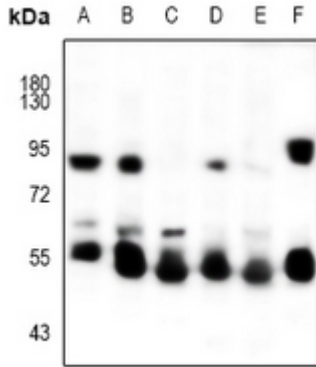
SwissProt: P13647; P02538; P04259;
P48668/Q922U2/Q6P6Q2

Purification: The antibody was purified by immunogen affinity chromatography.

Buffer: Liquid in 0.42% Potassium phosphate, 0.87% Sodium chloride, pH 7.3, 30% glycerol, and 0.01% sodium azide.

WB description:

Western blot analysis of Cytokeratin-5/6 expression in A375 (A), EC9706 (B), Hela (C), MCF7 (D), PC3 (E), rat ovary (F) whole cell lysates.



Storage:

Store at -20°C. Avoid repeated freeze / thaw cycles.