

Manufacturer/Supplier:

WUXI DONGLIN SCI&TECH DEVELOPMENT CO., LTD

Address: A1-203 Mingpin CityII, No.8 Xihudong Road, Liangxi District
Wuxi Jiangsu Province, China

TELE: 86-510-82732223

FAX: 86-510-82720101-8014

Web : www.dldevelop.com

Email: info@dldevelop.com.cn service@dldevelop.com.cn

Product name: Rabbit anti-GPR48 Antibody

Catalog: DL94706A

Synonyms: GPR48; Leucine-rich repeat-containing G-protein coupled receptor 4; G-protein coupled receptor 48

Immunogen: KLH-conjugated synthetic peptide encompassing a sequence within the center region of human GPR48. The exact sequence is proprietary.

Form: Liquid

Concentration: 1mg/mL

Size: 100 ul/50 ul

Host: Rabbit

Reactivity: Human, Mouse, Rat

Application: WB, IF/IC

Clonality: Polyclonal

Dilution: WB (1/500 - 1/1000),

IF/IC (1/100 - 1/500)

Entrez Gene: 55366/107515/286994

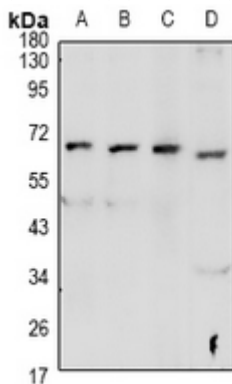
SwissProt: Q9BXB1/A2ARI4/Q9Z2H4

Purification: The antibody was purified by immunogen affinity chromatography.

Buffer: Liquid in 0.42% Potassium phosphate, 0.87% Sodium chloride, pH 7.3, 30% glycerol, and 0.01% sodium azide.

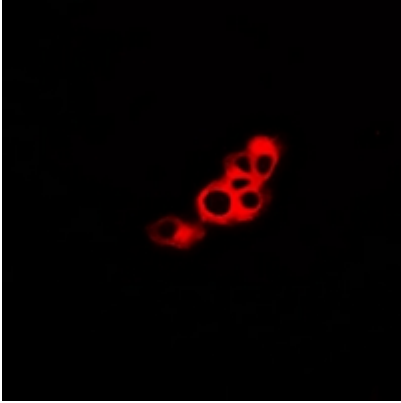
WB description:

Western blot analysis of GPR48 expression in HEK293T (A), PC3 (B), SP20 (C), PC12 (D) whole cell lysates.



IF/ICC description:

Immunofluorescent analysis of GPR48 staining in LOVO cells. Formalin-fixed cells were permeabilized with 0.1% Triton X-100 in TBS for 5-10 minutes and blocked with 3% BSA-PBS for 30 minutes at room temperature. Cells were probed with the primary antibody



Storage:

Store at -20°C. Avoid repeated freeze / thaw cycles.