

Manufacturer/Supplier:

WUXI DONGLIN SCI&TECH DEVELOPMENT CO., LTD

Address: A1-203 Mingpin CityII, No.8 Xihudong Road. Liangxi District
Wuxi Jiangsu Province, China

TELE: 86-510-82732223

FAX: 86-510-82720101-8014

Web : www.dldevelop.com

Email: info@dldevelop.com.cn service@dldevelop.com.cn

Product name: Rabbit anti-PHAX Antibody

Catalog: DL94623A

Synonyms: RNUXA; Phosphorylated adapter RNA export protein; RNA U small nuclear RNA export adapter protein

Immunogen: KLH-conjugated synthetic peptide encompassing a sequence within the center region of human PHAX. The exact sequence is proprietary.

Form: Liquid

Concentration: 1mg/mL

Size: 100 ul/50 ul

Host: Rabbit

Reactivity: Human, Mouse, Rat

Application: WB, ICC

Clonality: Polyclonal

Dilution: WB (1/500 - 1/1000),
ICC

Entrez Gene: 51808/56698/286917

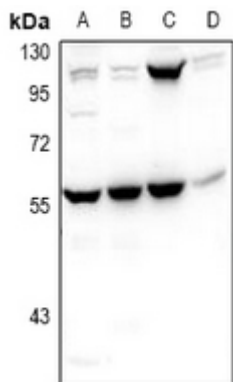
SwissProt: Q9H814/Q9JTT9/Q63068

Purification: The antibody was purified by immunogen affinity chromatography.

Buffer: Liquid in 0.42% Potassium phosphate, 0.87% Sodium chloride, pH 7.3, 30% glycerol, and 0.01% sodium azide.

WB description:

Western blot analysis of PHAX expression in LO2 (A), MCF7 (B), SP20 (C), H9C2 (D) whole cell lysates.



IF/ICC description:

Storage:

Store at -20°C. Avoid repeated freeze / thaw cycles.