

**Manufacturer/Supplier:**

WUXI DONGLIN SCI&TECH DEVELOPMENT CO., LTD

**Address:** A1-203 Mingpin CityII, No.8 Xihudong Road, Liangxi District  
Wuxi Jiangsu Province, China

**TELE:** 86-510-82732223

**FAX:** 86-510-82720101-8014

**Web :** [www.dldevelop.com](http://www.dldevelop.com)

**Email:** [info@dldevelop.com.cn](mailto:info@dldevelop.com.cn) [service@dldevelop.com.cn](mailto:service@dldevelop.com.cn)

**Product name:** Rabbit anti-RASL10B Antibody

**Catalog:** DL94615A

**Synonyms:** Ras-like protein family member 10B; Ras-like protein VTS58635; Ras-related protein 17; RRP17

**Immunogen:** KLH-conjugated synthetic peptide encompassing a sequence within the center region of human RASL10B. The exact sequence is proprietary.

**Form:** Liquid

**Concentration:** 1mg/mL

**Size:** 100 ul/50 ul

**Host:** Rabbit

**Reactivity:** Human, Mouse

**Application:** WB

**Clonality:** Polyclonal

**Dilution:** WB (1/500 - 1/1000)

**Entrez Gene:** 91608/276952

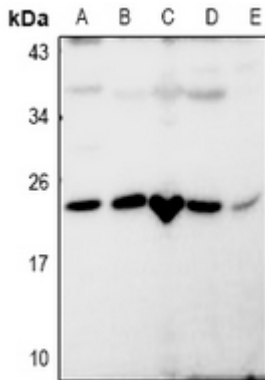
**SwissProt:** Q96S79/Q5SSG5

**Purification:** The antibody was purified by immunogen affinity chromatography.

**Buffer:** Liquid in 0.42% Potassium phosphate, 0.87% Sodium chloride, pH 7.3, 30% glycerol, and 0.01% sodium azide.

### WB description:

Western blot analysis of RASL10B expression in A549 (A), LOVO (B), SP20 (C), PMVEC (D), Hela (E) whole cell lysates.



**Storage:**



Store at -20°C. Avoid repeated freeze / thaw cycles.