

Manufacturer/Supplier:

WUXI DONGLIN SCI&TECH DEVELOPMENT CO., LTD

Address: A1-203 Mingpin CityII, No.8 Xihudong Road, Liangxi District
Wuxi Jiangsu Province, China

TELE: 86-510-82732223

FAX: 86-510-82720101-8014

Web : www.dldevelop.com

Email: info@dldevelop.com.cn service@dldevelop.com.cn

Product name: Rabbit anti-RAB3GAP2 Antibody

Catalog: DL94612A

Synonyms: KIAA0839; Rab3 GTPase-activating protein
non-catalytic subunit; RGAP-iso; Rab3
GTPase-activating protein 150 kDa subunit;
Rab3-GAP p150; Rab3-GAP150; Rab3-GAP
regulatory subunit

Immunogen: KLH-conjugated synthetic peptide encompassing a
sequence within the center region of human
RAB3GAP2. The exact sequence is proprietary.

Form: Liquid

Concentration: 1mg/mL

Size: 100 ul/50 ul

Host: Rabbit

Reactivity:

Human, Mouse, Rat, Monkey

Application: WB, IHC**Clonality:** Polyclonal

Dilution: WB (1/500 - 1/1000),
IHC (1/50 - 1/100)

Entrez Gene: 25782/98732/289350

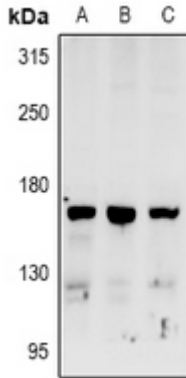
SwissProt: Q9H2M9/Q8BMG7/Q5U1Z0

Purification: The antibody was purified by immunogen affinity chromatography.

Buffer: Liquid in 0.42% Potassium phosphate, 0.87% Sodium chloride, pH 7.3, 30% glycerol, and 0.01% sodium azide.

WB description:

Western blot analysis of RAB3GAP2 expression in MCF7 (A), SGC7901 (B), A549 (C) whole cell lysates.



IHC description:

Immunohistochemical analysis of RAB3GAP2 staining in human breast cancer formalin fixed paraffin embedded tissue section. The section was pre-treated using heat mediated antigen retrieval with sodium citrate buffer (pH 6.0). The section was then incubated with the antibody at room temperature and detected using an HRP conjugated compact polymer system. DAB was used as the chromogen. The section was then counterstained with haematoxylin and mounted with DPX.

Storage:

Store at -20°C. Avoid repeated freeze / thaw cycles.