

Manufacturer/Supplier:

WUXI DONGLIN SCI&TECH DEVELOPMENT CO., LTD

Address: A1-203 Mingpin CityII, No.8 Xihudong Road. Liangxi District
Wuxi Jiangsu Province, China

TELE: 86-510-82732223

FAX: 86-510-82720101-8014

Web : www.dldevelop.com

Email: info@dldevelop.com.cn service@dldevelop.com.cn

Product name: Rabbit anti-Mannose Binding Protein Antibody

Catalog: DL94587A

Synonyms: COLEC1; MBL; Mannose-binding protein C;
MBP-C; Collectin-1; MBP1; Mannan-binding
protein; Mannose-binding lectin

Immunogen: KLH-conjugated synthetic peptide encompassing a
sequence within the center region of human
Mannose Binding Protein. The exact sequence is
proprietary.

Form: Liquid

Concentration: 1mg/mL

Size: 100 ul/50 ul

Host: Rabbit

Reactivity: Human, Mouse, Rat

Application: WB

Clonality: Polyclonal

Dilution: WB (1/500 - 1/1000)

Entrez Gene: 4153/17195/100911854; 64668

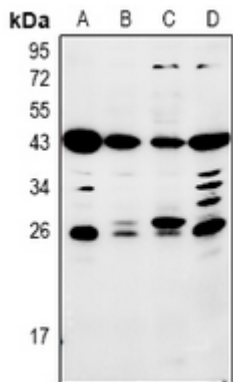
SwissProt: P11226/P41317/P08661

Purification: The antibody was purified by immunogen affinity chromatography.

Buffer: Liquid in 0.42% Potassium phosphate, 0.87% Sodium chloride, pH 7.3, 30% glycerol, and 0.01% sodium azide.

WB description:

Western blot analysis of Mannose Binding Protein expression in HepG2 (A), AML12 (B), PC12 (C), LO2 (D) whole cell lysates.



Storage:

Store at -20°C. Avoid repeated freeze / thaw cycles.