

Manufacturer/Supplier:

WUXI DONGLIN SCI&TECH DEVELOPMENT CO., LTD

Address: A1-203 Mingpin CityII, No.8 Xihudong Road, Liangxi District
Wuxi Jiangsu Province, China

TELE: 86-510-82732223

FAX: 86-510-82720101-8014

Web : www.dldevelop.com

Email: info@dldevelop.com.cn service@dldevelop.com.cn

Product name: Rabbit anti-TAB1 (pS438) Antibody

Catalog: DL94537A

Synonyms: MAP3K7IP1; TGF-beta-activated kinase 1 and
MAP3K7-binding protein 1; Mitogen-activated
protein kinase kinase kinase 7-interacting protein 1;
TGF-beta-activated kinase 1-binding protein 1;
TAK1-binding protein 1

Immunogen: KLH-conjugated synthetic peptide encompassing a
sequence within the C-term region of human TAB1.
The exact sequence is proprietary.

Form: Liquid

Concentration: 1mg/mL

Size: 100 ul/50 ul

Host: Rabbit

Reactivity: Human, Mouse, Rat

Application: WB

Clonality: Polyclonal

Dilution: WB (1/500 - 1/1000)

Entrez Gene: 10454/66513

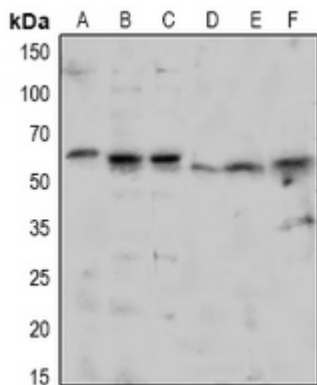
SwissProt: Q15750/Q8CF89

Purification: The antibody was purified by immunogen affinity chromatography.

Buffer: Liquid in 0.42% Potassium phosphate, 0.87% Sodium chloride, pH 7.3, 30% glycerol, and 0.01% sodium azide.

WB description:

Western blot analysis of TAB1 (pS438) expression in HeLa (A), HEK293T (B), MCF7 (C), mouse eye (D), mouse brain (E), rat brain (F) whole cell lysates.



Storage:

Store at -20°C. Avoid repeated freeze / thaw cycles.