

**Manufacturer/Supplier:**

WUXI DONGLIN SCI&TECH DEVELOPMENT CO., LTD

**Address:** A1-203 Mingpin CityII, No.8 Xihudong Road, Liangxi District  
Wuxi Jiangsu Province, China

TELE: 86-510-82732223

FAX: 86-510-82720101-8014

**Web :** [www.dldevelop.com](http://www.dldevelop.com)

Email: [info@dldevelop.com.cn](mailto:info@dldevelop.com.cn) [service@dldevelop.com.cn](mailto:service@dldevelop.com.cn)

**Product name:** Rabbit anti-CD172a/b Antibody

**Catalog:** DL94510A

**Synonyms:** SIRPA; BIT; MFR; MYD1; PTPNS1; SHPS1;  
SIRP; Tyrosine-protein phosphatase non-receptor  
type substrate 1; SHP substrate 1; SHPS-1; Brain  
Ig-like molecule with tyrosine-based activation  
motifs; Bit; CD172 antigen-like family member A;  
Inhibitory receptor SHP

**Immunogen:** KLH-conjugated synthetic peptide encompassing a  
sequence within the center region of human  
CD172a/b. The exact sequence is proprietary.

**Form:** Liquid

**Concentration:** 1mg/mL

**Size:** 100 ul/50 ul

**Host:** Rabbit

**Reactivity:** Human

**Application:** WB, IHC

**Clonality:** Polyclonal

**Dilution:** WB (1/500 - 1/1000),  
IHC (1/50 - 1/100)

**Entrez Gene:**

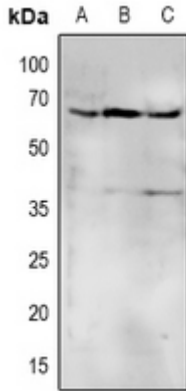
**SwissProt:** P78324; Q5TFQ8

**Purification:** The antibody was purified by immunogen affinity chromatography.

**Buffer:** Liquid in 0.42% Potassium phosphate, 0.87% Sodium chloride, pH 7.3, 30% glycerol, and 0.01% sodium azide.

**WB description:**

Western blot analysis of CD172a/b expression in Hela (A), HepG2 (B), SGC7901 (C) whole cell lysates.



### IHC description:

Immunohistochemical analysis of CD172a/b staining in human brain formalin fixed paraffin embedded tissue section. The section was pre-treated using heat mediated antigen retrieval with sodium citrate buffer (pH 6.0). The section was then incubated with the antibody at room temperature and detected using an HRP conjugated compact polymer system. DAB was used as the chromogen. The section was then counterstained with haematoxylin and mounted with DPX.

### Storage:

Store at -20°C. Avoid repeated freeze / thaw cycles.