

Manufacturer/Supplier:

WUXI DONGLIN SCI&TECH DEVELOPMENT CO., LTD

Address: A1-203 Mingpin CityII, No.8 Xihudong Road, Liangxi District
Wuxi Jiangsu Province, China

TELE: 86-510-82732223

FAX: 86-510-82720101-8014

Web : www.dldevelop.com

Email: info@dldevelop.com.cn service@dldevelop.com.cn

Product name: Rabbit anti-EPHA8 (pY838) Antibody

Catalog: DL94503A

Synonyms: EEK; HEK3; KIAA1459; Ephrin type-A receptor 8;
EPH- and ELK-related kinase; EPH-like kinase 3;
EK3; hEK3; Tyrosine-protein kinase receptor EEK

Immunogen: KLH-conjugated synthetic peptide encompassing a
sequence within the C-term region of human
EPHA8. The exact sequence is proprietary.

Form: Liquid

Concentration: 1mg/mL

Size: 100 ul/50 ul

Host: Rabbit

Reactivity:

Human, Mouse, Rat, Chicken

Application: WB

Clonality: Polyclonal

Dilution: WB (1/500 - 1/1000)

Entrez Gene: 2046/13842

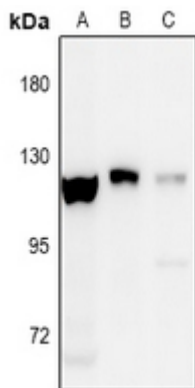
SwissProt: P29322/O09127/P29321

Purification: The antibody was purified by immunogen affinity chromatography.

Buffer: Liquid in 0.42% Potassium phosphate, 0.87% Sodium chloride, pH 7.3, 30% glycerol, and 0.01% sodium azide.

WB description:

Western blot analysis of EPHA8 (pY838) expression in Hela (A), mouse spleen (B), rat kidney (C) whole cell lysates.

**Storage:**

Store at -20°C. Avoid repeated freeze / thaw cycles.