

**Manufacturer/Supplier:**

WUXI DONGLIN SCI&TECH DEVELOPMENT CO., LTD

**Address:** A1-203 Mingpin CityII, No.8 Xihudong Road, Liangxi District  
Wuxi Jiangsu Province, China

TELE: 86-510-82732223

FAX: 86-510-82720101-8014

**Web :** [www.dldevelop.com](http://www.dldevelop.com)

Email: [info@dldevelop.com.cn](mailto:info@dldevelop.com.cn) [service@dldevelop.com.cn](mailto:service@dldevelop.com.cn)

**Product name:** Rabbit anti-CNGA1 Antibody

**Catalog:** DL94495A

**Synonyms:** CNCG; CNCG1; cGMP-gated cation channel  
alpha-1; Cyclic nucleotide-gated cation channel 1;  
Cyclic nucleotide-gated channel alpha-1; CNG  
channel alpha-1; CNG-1; CNG1; Cyclic  
nucleotide-gated channel photoreceptor; Rod  
photoreceptor cGMP-gated channel subunit

**Immunogen:** KLH-conjugated synthetic peptide encompassing a  
sequence within the center region of human  
CNGA1. The exact sequence is proprietary.

**Form:** Liquid

**Concentration:** 1mg/mL

**Size:** 100 ul/50 ul

**Host:** Rabbit

**Reactivity:**

Human, Mouse, Rat, Bovine, Chicken, Dog, Pig

**Application:** WB**Clonality:** Polyclonal**Dilution:** WB (1/500 - 1/1000)**Entrez Gene:**

1259/12788/85259

**SwissProt:**

P29973/P29974/Q62927

**Purification:**

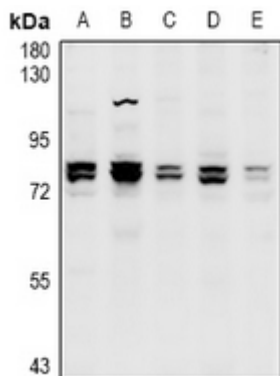
The antibody was purified by immunogen affinity chromatography.

**Buffer:**

Liquid in 0.42% Potassium phosphate, 0.87% Sodium chloride, pH 7.3, 30% glycerol, and 0.01% sodium azide.

**WB description:**

Western blot analysis of CNGA1 expression in CT26 (A), PC12 (B), A549 (C), MCF7 (D), LO2 (E) whole cell lysates.



**Storage:**

Store at -20°C. Avoid repeated freeze / thaw cycles.