

**Manufacturer/Supplier:**

WUXI DONGLIN SCI&TECH DEVELOPMENT CO., LTD

**Address:** A1-203 Mingpin CityII, No.8 Xihudong Road, Liangxi District  
Wuxi Jiangsu Province, China

TELE: 86-510-82732223

FAX: 86-510-82720101-8014

**Web :** [www.dldevelop.com](http://www.dldevelop.com)

Email: [info@dldevelop.com.cn](mailto:info@dldevelop.com.cn)    [service@dldevelop.com.cn](mailto:service@dldevelop.com.cn)

**Product name:** Rabbit anti-HSD17B2 Antibody

**Catalog:** DL94448A

**Synonyms:** EDH17B2; Estradiol 17-beta-dehydrogenase 2;  
17-beta-hydroxysteroid dehydrogenase type 2;  
17-beta-HSD 2; 20 alpha-hydroxysteroid  
dehydrogenase; 20-alpha-HSD; E2DH; Microsomal  
17-beta-hydroxysteroid dehydrogenase;  
Testosterone 17-beta-dehydrogenase

**Immunogen:** KLH-conjugated synthetic peptide encompassing a  
sequence within the center region of human  
HSD17B2. The exact sequence is proprietary.

**Form:** Liquid

**Concentration:** 1mg/mL

**Size:** 100 ul/50 ul

**Host:** Rabbit

**Reactivity:** Human, Mouse

**Application:** WB

**Clonality:** Polyclonal

**Dilution:** WB (1/500 - 1/1000)

**Entrez Gene:** 3294/15486

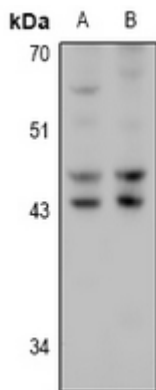
**SwissProt:** P37059/P51658

**Purification:** The antibody was purified by immunogen affinity chromatography.

**Buffer:** Liquid in 0.42% Potassium phosphate, 0.87% Sodium chloride, pH 7.3, 30% glycerol, and 0.01% sodium azide.

**WB description:**

Western blot analysis of HSD17B2 expression in HCT116 (A), CT26 (B) whole cell lysates.



**Storage:**

Store at -20°C. Avoid repeated freeze / thaw cycles.