

Manufacturer/Supplier:

WUXI DONGLIN SCI&TECH DEVELOPMENT CO., LTD

Address: A1-203 Mingpin CityII, No.8 Xihudong Road, Liangxi District
Wuxi Jiangsu Province, China

TELE: 86-510-82732223

FAX: 86-510-82720101-8014

Web : www.dldevelop.com

Email: info@dldevelop.com.cn service@dldevelop.com.cn

Product name: Rabbit anti-IKK gamma Antibody

Catalog: DL94427A

Synonyms: FIP3; NEMO; NF-kappa-B essential modulator;
NEMO; FIP-3; Ikb kinase-associated protein 1;
IKKAP1; Inhibitor of nuclear factor kappa-B kinase
subunit gamma; I-kappa-B kinase subunit gamma;
IKK-gamma; IKKG; Ikb kinase subunit gamma;
NF-kappa-B essential mod

Immunogen: KLH-conjugated synthetic peptide encompassing a
sequence within the center region of human IKK
gamma. The exact sequence is proprietary.

Form: Liquid

Concentration: 1mg/mL

Size: 100 ul/50 ul

Host: Rabbit

Reactivity: Human

Application: WB, IHC

Clonality: Polyclonal

Dilution: WB (1/500 - 1/2000),
IHC (1/50 - 1/200)

Entrez Gene: 8517

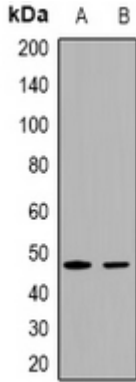
SwissProt: Q9Y6K9

Purification: The antibody was purified by immunogen affinity chromatography.

Buffer: Liquid in 0.42% Potassium phosphate, 0.87% Sodium chloride, pH 7.3, 30% glycerol, and 0.01% sodium azide.

WB description:

Western blot analysis of IKK gamma expression in HEK293T (A), Hela (B) whole cell lysates.



IHC description:

Immunohistochemical analysis of IKK gamma staining in human brain formalin fixed paraffin embedded tissue section. The section was pre-treated using heat mediated antigen retrieval with sodium citrate buffer (pH 6.0). The section was then incubated with the antibody at room temperature and detected using an HRP conjugated compact polymer system. DAB was used as the chromogen. The section was then counterstained with haematoxylin and mounted with DPX.

Storage:

Store at -20°C. Avoid repeated freeze / thaw cycles.