

Manufacturer/Supplier:

WUXI DONGLIN SCI&TECH DEVELOPMENT CO., LTD

Address: A1-203 Mingpin CityII, No.8 Xihudong Road, Liangxi District
Wuxi Jiangsu Province, China

TELE: 86-510-82732223

FAX: 86-510-82720101-8014

Web : www.dldevelop.com

Email: info@dldevelop.com.cn service@dldevelop.com.cn

Product name: Rabbit anti-DCLK2 Antibody

Catalog: DL94409A

Synonyms: DCAMKL2; DCDC3B; DCK2;
Serine/threonine-protein kinase DCLK2;
CaMK-like CREB regulatory kinase 2; CL2;
CLICK-II; CLICK2; Doublecortin
domain-containing protein 3B; Doublecortin-like
and CAM kinase-like 2; Doublecortin-like kinase 2

Immunogen: KLH-conjugated synthetic peptide encompassing a
sequence within the N-term region of human
DCLK2. The exact sequence is proprietary.

Form: Liquid

Concentration: 1mg/mL

Size: 100 ul/50 ul

Host: Rabbit

Reactivity: Human, Mouse, Rat

Application: WB, IF/IC

Clonality: Polyclonal

Dilution: WB (1/500 - 1/2000),
IF/IC (1/50 - 1/100)

Entrez Gene: 166614/70762/310698

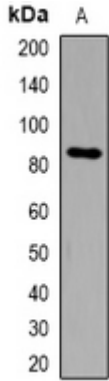
SwissProt: Q8N568/Q6PGN3/Q5MPA9

Purification: The antibody was purified by immunogen affinity chromatography.

Buffer: Liquid in 0.42% Potassium phosphate, 0.87% Sodium chloride, pH 7.3, 30% glycerol, and 0.01% sodium azide.

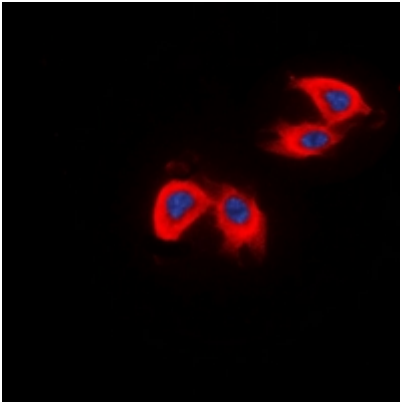
WB description:

Western blot analysis of DCLK2 expression in HepG2 (A) whole cell lysates.



IF/ICC description:

Immunofluorescent analysis of DCLK2 staining in HepG2 cells. Formalin-fixed cells were permeabilized with 0.1% Triton X-100 in TBS for 5-10 minutes and blocked with 3% BSA-PBS for 30 minutes at room temperature. Cells were probed with the primary antibody



Storage:



Store at -20°C. Avoid repeated freeze / thaw cycles.