

Manufacturer/Supplier:

WUXI DONGLIN SCI&TECH DEVELOPMENT CO., LTD

Address: A1-203 Mingpin CityII, No.8 Xihudong Road, Liangxi District
Wuxi Jiangsu Province, China

TELE: 86-510-82732223

FAX: 86-510-82720101-8014

Web : www.dldevelop.com

Email: info@dldevelop.com.cn service@dldevelop.com.cn

Product name: Rabbit anti-EID1 Antibody

Catalog: DL94390A

Synonyms: C15orf3; CRI1; RBP21; EP300-interacting inhibitor of differentiation 1; 21 kDa pRb-associated protein; CREBBP/EP300 inhibitory protein 1; E1A-like inhibitor of differentiation 1; EID-1

Immunogen: KLH-conjugated synthetic peptide encompassing a sequence within the center region of human EID1. The exact sequence is proprietary.

Form: Liquid

Concentration: 1mg/mL

Size: 100 ul/50 ul

Host: Rabbit

Reactivity: Human, Bovine

Application: WB, IHC, IF/IC

Clonality: Polyclonal

Dilution: WB (1/500 - 1/2000),
IHC (1/50 - 1/200), IF/IC (1/50 -
1/100)

Entrez Gene: 23741

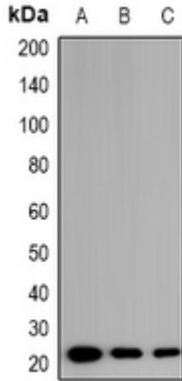
SwissProt: Q9Y6B2

Purification: The antibody was purified by immunogen affinity chromatography.

Buffer: Liquid in 0.42% Potassium phosphate, 0.87% Sodium chloride, pH 7.3, 30% glycerol, and 0.01% sodium azide.

WB description:

Western blot analysis of EID1 expression in PC3 (A), HeLa (B), HCT116 (C) whole cell lysates.

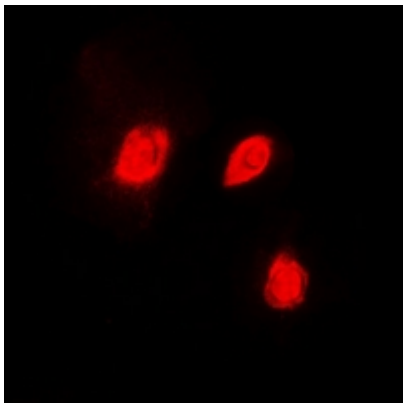


IHC description:

Immunohistochemical analysis of EID1 staining in human brain formalin fixed paraffin embedded tissue section. The section was pre-treated using heat mediated antigen retrieval with sodium citrate buffer (pH 6.0). The section was then incubated with the antibody at room temperature and detected using an HRP conjugated compact polymer system. DAB was used as the chromogen. The section was then counterstained with haematoxylin and mounted with DPX.

IF/ICC description:

Immunofluorescent analysis of EID1 staining in HeLa cells. Formalin-fixed cells were permeabilized with 0.1% Triton X-100 in TBS for 5-10 minutes and blocked with 3% BSA-PBS for 30 minutes at room temperature. Cells were probed with the primary antibody i



Storage:

Store at -20°C. Avoid repeated freeze / thaw cycles.