

**Manufacturer/Supplier:**

WUXI DONGLIN SCI&TECH DEVELOPMENT CO., LTD

**Address:** A1-203 Mingpin CityII, No.8 Xihudong Road, Liangxi District  
Wuxi Jiangsu Province, China

TELE: 86-510-82732223

FAX: 86-510-82720101-8014

**Web :** [www.dldevelop.com](http://www.dldevelop.com)

Email: [info@dldevelop.com.cn](mailto:info@dldevelop.com.cn) [service@dldevelop.com.cn](mailto:service@dldevelop.com.cn)

**Product name:** Rabbit anti-TRAPPC5 Antibody

**Catalog:** DL94343A

**Synonyms:** Trafficking protein particle complex subunit 5

**Immunogen:** KLH-conjugated synthetic peptide encompassing a sequence within the center region of human TRAPPC5. The exact sequence is proprietary.

**Form:** Liquid

**Concentration:** 1mg/mL

**Size:** 100 ul/50 ul

**Host:** Rabbit

**Reactivity:**

Human, Mouse, Rat, Bovine, Chicken

**Application:** WB, IHC

**Clonality:** Polyclonal

**Dilution:** WB (1/500 - 1/2000),  
IHC (1/50 - 1/200)

**Entrez Gene:** 126003/66682

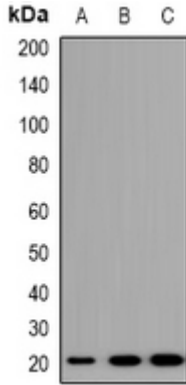
**SwissProt:** Q8IUR0/Q9CQA1

**Purification:** The antibody was purified by immunogen affinity chromatography.

**Buffer:** Liquid in 0.42% Potassium phosphate, 0.87% Sodium chloride, pH 7.3, 30% glycerol, and 0.01% sodium azide.

**WB description:**

Western blot analysis of TRAPPC5 expression in A549 (A), NIH3T3 (B), H9C2 (C) whole cell lysates.



### IHC description:

Immunohistochemical analysis of TRAPPC5 staining in human lung cancer formalin fixed paraffin embedded tissue section. The section was pre-treated using heat mediated antigen retrieval with sodium citrate buffer (pH 6.0). The section was then incubated with the antibody at room temperature and detected using an HRP conjugated compact polymer system. DAB was used as the chromogen. The section was then counterstained with haematoxylin and mounted with DPX.

### Storage:

Store at -20°C. Avoid repeated freeze / thaw cycles.